

SECTION A-A
SYSTEM 2:1 INDIRECT ACTING

REACTIONS lb (DOUBLED FOR IMPACT)																	
PIT (R) 5500 (24465) MAX																	
BUFFER (RB) -																	
RAIL	<table border="1"> <tr> <td></td> <td>F2</td> <td>F3</td> </tr> <tr> <td>NORMAL</td> <td>200 (890)</td> <td>595 (2650)</td> </tr> <tr> <td>SEISMIC</td> <td></td> <td></td> </tr> </table>		F2	F3	NORMAL	200 (890)	595 (2650)	SEISMIC									
	F2	F3															
NORMAL	200 (890)	595 (2650)															
SEISMIC																	
GENERAL	<table border="1"> <tr> <td>CLASSIFICATION</td> <td>RESIDENTIAL</td> </tr> <tr> <td>CAPACITY lb (kg)</td> <td>950 (430)</td> </tr> <tr> <td>FLOOR SERVED</td> <td>-</td> </tr> <tr> <td>SPEED fpm (m/s)</td> <td>-</td> </tr> <tr> <td>RAILS lb/ft (kg/m)</td> <td>8 (12)</td> </tr> <tr> <td>OPERATION</td> <td>SELECTIVE COLLECTIVE</td> </tr> <tr> <td>POWER SUPPLY</td> <td>208/230V 1 PHASE 60 Hz.</td> </tr> </table>	CLASSIFICATION	RESIDENTIAL	CAPACITY lb (kg)	950 (430)	FLOOR SERVED	-	SPEED fpm (m/s)	-	RAILS lb/ft (kg/m)	8 (12)	OPERATION	SELECTIVE COLLECTIVE	POWER SUPPLY	208/230V 1 PHASE 60 Hz.		
CLASSIFICATION	RESIDENTIAL																
CAPACITY lb (kg)	950 (430)																
FLOOR SERVED	-																
SPEED fpm (m/s)	-																
RAILS lb/ft (kg/m)	8 (12)																
OPERATION	SELECTIVE COLLECTIVE																
POWER SUPPLY	208/230V 1 PHASE 60 Hz.																
MACHINE	<table border="1"> <tr> <td>CONTROLLER</td> <td>PRO-1</td> </tr> <tr> <td>PUMP UNIT</td> <td>ULTIMA-0</td> </tr> <tr> <td>MOTOR - HP (kW)</td> <td>GMV -</td> </tr> <tr> <td>FULL LOAD CUR. (A)</td> <td>-</td> </tr> <tr> <td>CONTROL VALVE</td> <td>GMV 3010 EN</td> </tr> <tr> <td>FEED LINE in (mm)</td> <td>1"SCH.80 (25.4) DIA.</td> </tr> <tr> <td>WORKING psi (kPa)</td> <td>-</td> </tr> <tr> <td>RELIEF psi (kPa)</td> <td>-</td> </tr> </table>	CONTROLLER	PRO-1	PUMP UNIT	ULTIMA-0	MOTOR - HP (kW)	GMV -	FULL LOAD CUR. (A)	-	CONTROL VALVE	GMV 3010 EN	FEED LINE in (mm)	1"SCH.80 (25.4) DIA.	WORKING psi (kPa)	-	RELIEF psi (kPa)	-
CONTROLLER	PRO-1																
PUMP UNIT	ULTIMA-0																
MOTOR - HP (kW)	GMV -																
FULL LOAD CUR. (A)	-																
CONTROL VALVE	GMV 3010 EN																
FEED LINE in (mm)	1"SCH.80 (25.4) DIA.																
WORKING psi (kPa)	-																
RELIEF psi (kPa)	-																
H/W ENTR.	<table border="1"> <tr> <td>DOOR TYPE</td> <td>2 SPEED AUTOMATIC</td> </tr> <tr> <td>DOOR SAFETY RETAIN.</td> <td>YES</td> </tr> <tr> <td>INTERLOCK</td> <td>MECHANICAL/ELECTRICAL-CSA</td> </tr> </table>	DOOR TYPE	2 SPEED AUTOMATIC	DOOR SAFETY RETAIN.	YES	INTERLOCK	MECHANICAL/ELECTRICAL-CSA										
DOOR TYPE	2 SPEED AUTOMATIC																
DOOR SAFETY RETAIN.	YES																
INTERLOCK	MECHANICAL/ELECTRICAL-CSA																
CAR	<table border="1"> <tr> <td>ENCLOSURE</td> <td>STEEL</td> </tr> <tr> <td>DOOR OPERATOR</td> <td>VICTORY-(39/36 T070) CSA</td> </tr> <tr> <td>DOOR REOPENING DEV.</td> <td>TL-JONES LIGHT CURTAIN</td> </tr> <tr> <td>GUIDE SHOES/ROLLERS</td> <td>TECHNOLIFT</td> </tr> </table>	ENCLOSURE	STEEL	DOOR OPERATOR	VICTORY-(39/36 T070) CSA	DOOR REOPENING DEV.	TL-JONES LIGHT CURTAIN	GUIDE SHOES/ROLLERS	TECHNOLIFT								
ENCLOSURE	STEEL																
DOOR OPERATOR	VICTORY-(39/36 T070) CSA																
DOOR REOPENING DEV.	TL-JONES LIGHT CURTAIN																
GUIDE SHOES/ROLLERS	TECHNOLIFT																
CAR FRAME & PLATF.	<table border="1"> <tr> <td>CAR FRAME TYPE</td> <td>OLS T601</td> </tr> <tr> <td>ROPES</td> <td>TWO X 3/8 (9.5MM) DIA.</td> </tr> <tr> <td>SAFETY</td> <td>A</td> </tr> <tr> <td>PLATFORM in</td> <td>3 1/8"H x 40"W. x 67"DP.</td> </tr> </table>	CAR FRAME TYPE	OLS T601	ROPES	TWO X 3/8 (9.5MM) DIA.	SAFETY	A	PLATFORM in	3 1/8"H x 40"W. x 67"DP.								
CAR FRAME TYPE	OLS T601																
ROPES	TWO X 3/8 (9.5MM) DIA.																
SAFETY	A																
PLATFORM in	3 1/8"H x 40"W. x 67"DP.																
WEIGHT lb (kg)	<table border="1"> <tr> <td>CAR</td> <td>900 MAX (410)</td> </tr> <tr> <td>PLUNGER</td> <td>-</td> </tr> <tr> <td>PUMP UNIT</td> <td>-</td> </tr> <tr> <td>CONTROLLER</td> <td>-</td> </tr> </table>	CAR	900 MAX (410)	PLUNGER	-	PUMP UNIT	-	CONTROLLER	-								
CAR	900 MAX (410)																
PLUNGER	-																
PUMP UNIT	-																
CONTROLLER	-																
CAB CONFIGURATION 3' x 5' RH																	

PROVISIONS BY OTHERS

UNLESS OTHERWISE SPECIFIED, ALL RULES FOLLOW THE ASME A17.1 SAFETY CODE FOR ELEVATORS AND ESCALATORS, THE CAN/CSA-B44 AND THE CAN/CSA-B613 BASED ON THE LATEST EDITION AND REVISION AT DATE OF DRAWING.

- MACHINE ROOM TEMPERATURE 50°-90°
 - TWO CUTOUTS IN WALL FOR OIL AND ELECTRICAL LINES, REFER TO CONSTRUCTION DRAWINGS FOR EXACT DETAILS.
- HOISTWAY**
- DESIGNED AND BUILT TO HANDLE LOADS IMPOSED AS SPECIFIED. FREE OF PIPES AND OBSTRUCTIONS.
 - FIXED PIT WATER PROOFING OR SUMP PUMP AS REQUIRED. PIT FLOOR DESIGNED FOR REACTION SHOWN. PIT LADDER REQUIRED WHEN PIT DEPTH OVER 3'-0".
 - CLEAR HOISTWAY SIZE GUARANTEED PLUMB WITHIN +1/2",-0".
 - ENTRANCE WALLS OF HOISTWAY NOT TO BE BUILT UNTIL DOOR FRAMES ARE SET. PROVIDE ALL PATCHING, CAULKING, AND TOUCH UP WORK.
 - ENTRANCE FRAMES ARE NOT DESIGNED TO SUPPORT OVERHEAD WALL LOADS. SUITABLE SUPPORTS FOR THESE LOADS MUST BE PROVIDED.
 - PROVIDE OVERHEAD BEAM FOR LIFTING ELEVATOR COMPONENTS WITH MINIMUM LOAD CAPACITY OF 1000 lb.
 - CLEAR ACCESS FOR MOVING JACK UNIT INTO THE HOISTWAY (SIZES AS SHOWN ON DRAWING).
 - SIGNAGE TO BE PROVIDED.

- ELECTRICAL (SEE CONSTRUCTION DRAWINGS FOR LOCATION)**
- 230 VAC 40A 1PH AND GROUND RECEPTACLE, CLOSE TO POWER UNIT, SUPPLIED THROUGH 50A FUSED LOCKABLE DISCONNECT SWITCH, LOCATED WHERE IT IS VISIBLE ON ENTRY TO THE MACHINERY AREA AND READILY ACCESSIBLE TO THE AUTHORIZED PERSONS (LOCK-JAMB SIDE OF ACCESS DOOR).
 - 120 VAC 15A 1PH AND GROUND RECEPTACLE, CLOSE TO POWER UNIT, SUPPLIED THROUGH LOCKABLE DISCONNECT SWITCH.
 - PERMANENT LIGHT FIXTURES AND SWITCHES TO BE SUITABLY LOCATED IN MACHINE ROOM AND PITS OVER 3'DP. LIGHT SWITCHES TO BE LOCATED ON JAMB SIDE OF PIT AND MACHINE ROOM ACCESS. LIGHTING IN MACHINE ROOM OF NOT LESS THAN 5 ftc. AT FLOOR LEVEL. LIGHTING IN PIT OF NOT LESS THAN 5 ftc. AT PIT FLOOR LEVEL.
 - PHONE JACK AND CABLE TO CONTROLLER, CLOSE TO RECEPTACLES IN MACHINE ROOM.

SUBMITTALS

No.	REV.	DATE	BY	DESCRIPTION
1	0	-	-	APPROVAL



JOB No. _____

SCALE N.T.S.

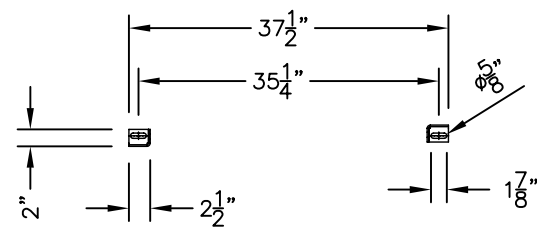
PROJECT _____ DRN BY: _____

LOCATION _____ DATE: _____

ELEVATOR CO. _____

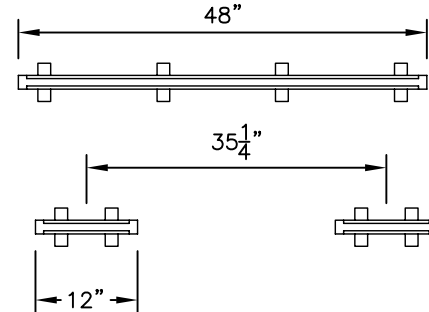
GEN. CONT. _____ REF. No. **123904**

ARCHITECT _____ SHEET 1 of 2



RAIL BRACKET MOUNTING DETAIL

RAIL WALL INSERT



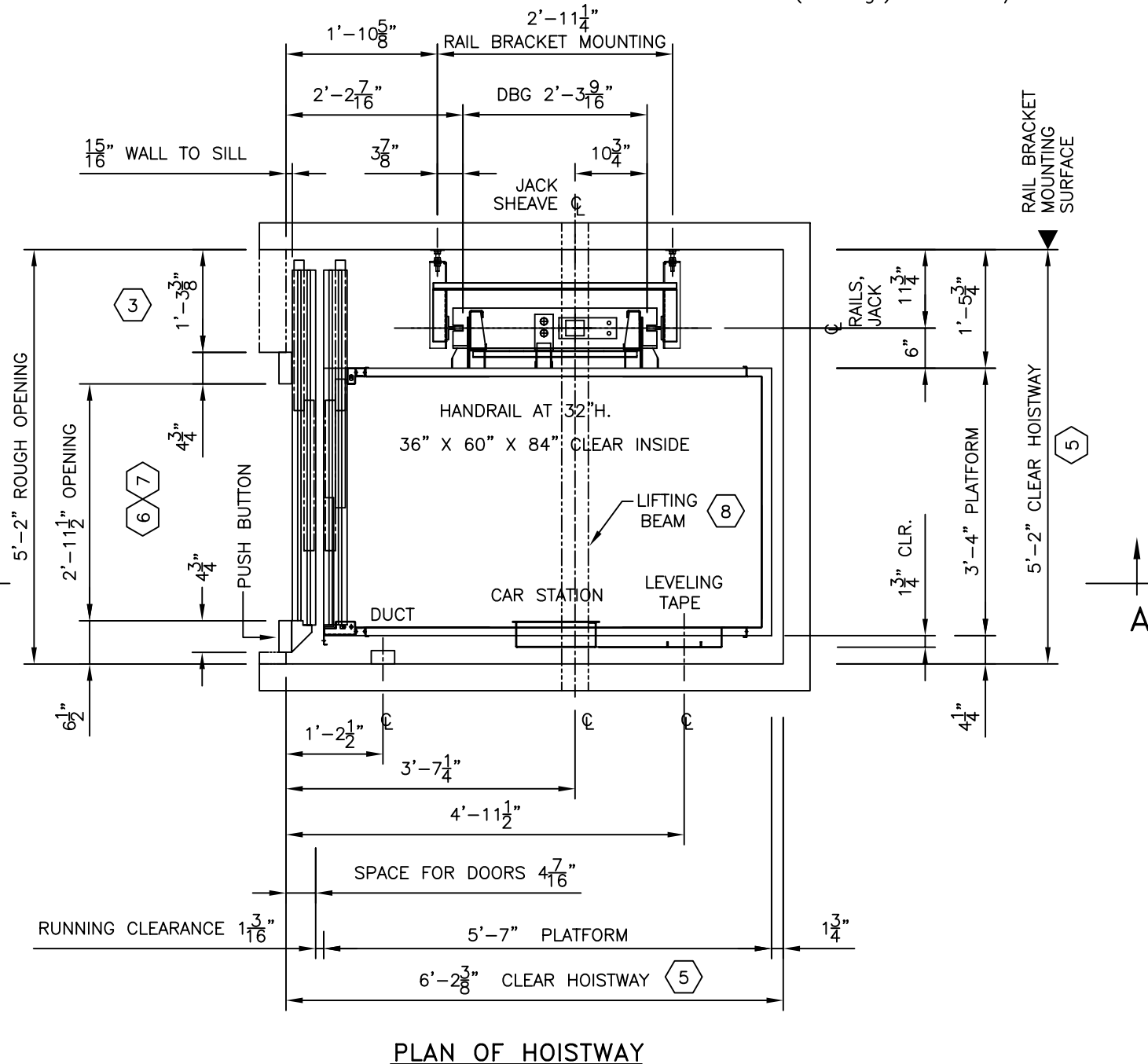
Note: When using rail wall insert, use 48"lg. or 2 (12" lg.) at 35 1/4" centers.

	COMPONENT	OPTION
HALL STATION	SINGLE PUSH BUTTON BRASS	QTY.
	SINGLE PUSH BUTTON STAINLESS ST.	QTY.
	DOUBLE PUSH BUTTON BRASS	QTY.
	DOUBLE PUSH BUTTON STAINLESS ST.	QTY.
MACHINE ROOM CONFIGURATION		1 / 2 / 3

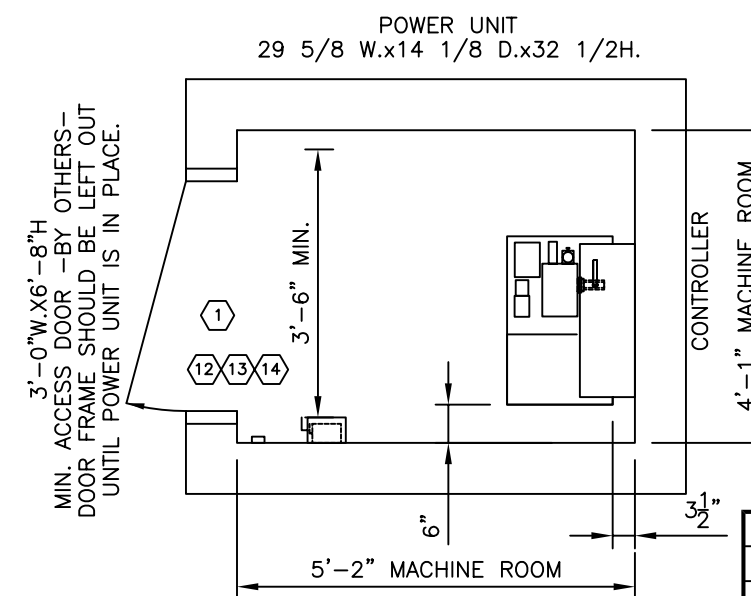
EXTRA COMPONENTS
(REMOTE MACHINE ROOM ONLY)

TROUGH		PIPE	
DESCRIPTION	QTY.	DESCRIPTION	QTY.
TROUGH 1ft. LG.	-	PIPE 7ft. LG.	-
TROUGH 2ft. LG.	-	90° VIC. ELBOW	-
TROUGH 3ft. LG.	-	VIC. COUPLING	-
TROUGH 4ft. LG.	-	PIPE CLAMP	-
TROUGH 5ft. LG.	-	THRU. WALL CLAMP	-
WALL ADAPTER	-	M/R HARNESS	
ELBOW M/R	-		
ELBOW 1	-		
ELBOW 2	-		
PANEL ADAPTER	-	DESCRIPTION	Length (ft.)
TELESCOPE	-	EXTENSION	-

	COMPONENT	OPTION
GENERAL	NO. OF JACK PIECES:	1 OR 2
	HOISTWAY CONSTRUCTION:	WOOD/CONCRETE/BLOCK
	SEISMIC REQUIREMENT:	YES/NO
CAB DETAILS	C.O.P FINISH:	STAINLESS ST./BRASS
	CAB LIGHT:	WHITE/BLACK/GOLD/ GOLD BRUSHED/CHROME/ CHROME BRUSHED
	CAB SILL:	CLEAR ANODIZED/GOLD ANODIZED
CAB WALL PANELS	PANEL:	RAISED/VENEER/FORMICA
	TYPE (Veneer Only):	BIRCH/CHERRY/OAK
	STAIN (Veneer Only):	21/55/62/65/67/68/69 UN-FINISHED
CEILING PANELS	PANEL:	VENEER/FORMICA
	TYPE (Veneer Only):	BIRCH/CHERRY/OAK
	STAIN (Veneer Only):	21/55/62/65/67/68/69 UN-FINISHED
HANDRAIL	PANEL:	VENEER/FORMICA
	TYPE:	BRASS/STAINLESS ST./OAK
	STAIN (Oak Only):	21/55/62/65/67/68/69 UN-FINISHED
CAB DOOR	PANEL:	PAINTED/STAINLESS ST./FORMICA/VENEER
	TYPE (Veneer Only):	BIRCH/CHERRY/OAK
	STAIN (Veneer Only):	21/55/62/65/67/68/69 UN-FINISHED
LANDING FRAME	RIGHT HAND:	QTY.
	TYPE:	PAINTED/STAINLESS ST.
	PAINTED:	QTY.
LANDING DOOR PANELS	STAINLESS ST.	QTY.
	FORMICA:	QTY.
	FORMICA # & DESCRIPTION	-
LANDING DOOR	VENEER:	QTY.
	TYPE:	BIRCH/CHERRY/OAK
	FINISH:	FINISHED/UNFINISHED
CAB DOOR	STAIN:	21/55/62/65/67/68/69
	LACQUER:	MATTE/SEMI-GLOSS
	FORMICA # & DESCRIPTION	-



PLAN OF HOISTWAY



PLAN OF MACHINE ROOM

-MACHINE ROOM LOCATED AT BOTTOM FLOOR.

MACHINE ROOM SIZE MAY VARY AS LONG AS MINIMUM CLEARANCES ARE MAINTAINED

SUBMITTALS				
No.	REV.	DATE	BY	DESCRIPTION
1	0	-	-	APPROVAL

NOTE: THIS DRAWING IS NOT TO BE USED FOR CONSTRUCTION OF HOISTWAY. REFER TO HOISTWAY CONSTRUCTION DRAWINGS FOR DETAILS.

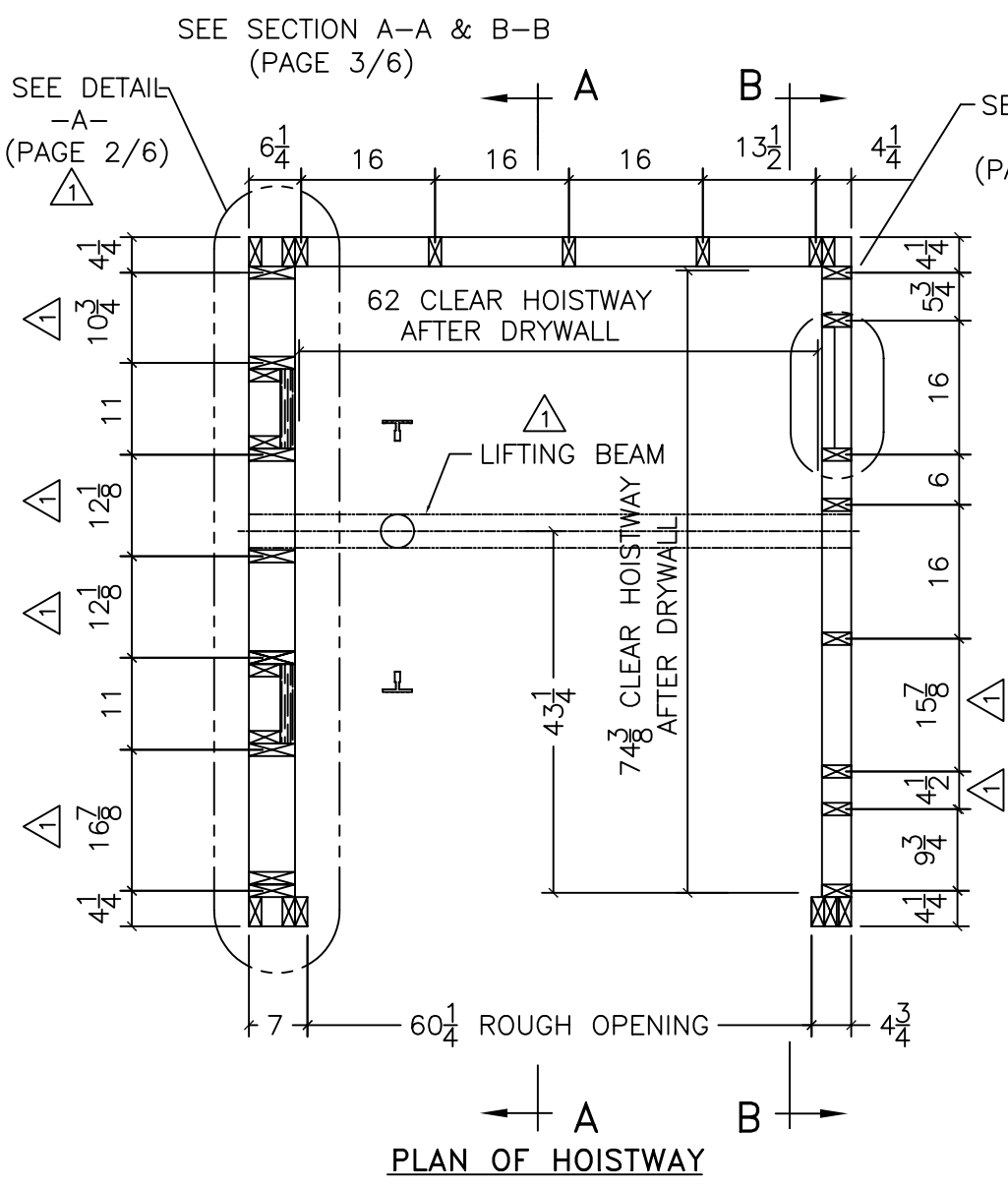
CAB CONFIGURATION 3' x 5' RH



PROJECT _____
LOCATION _____
ELEVATOR CO. _____
GEN. CONT. _____
ARCHITECT _____

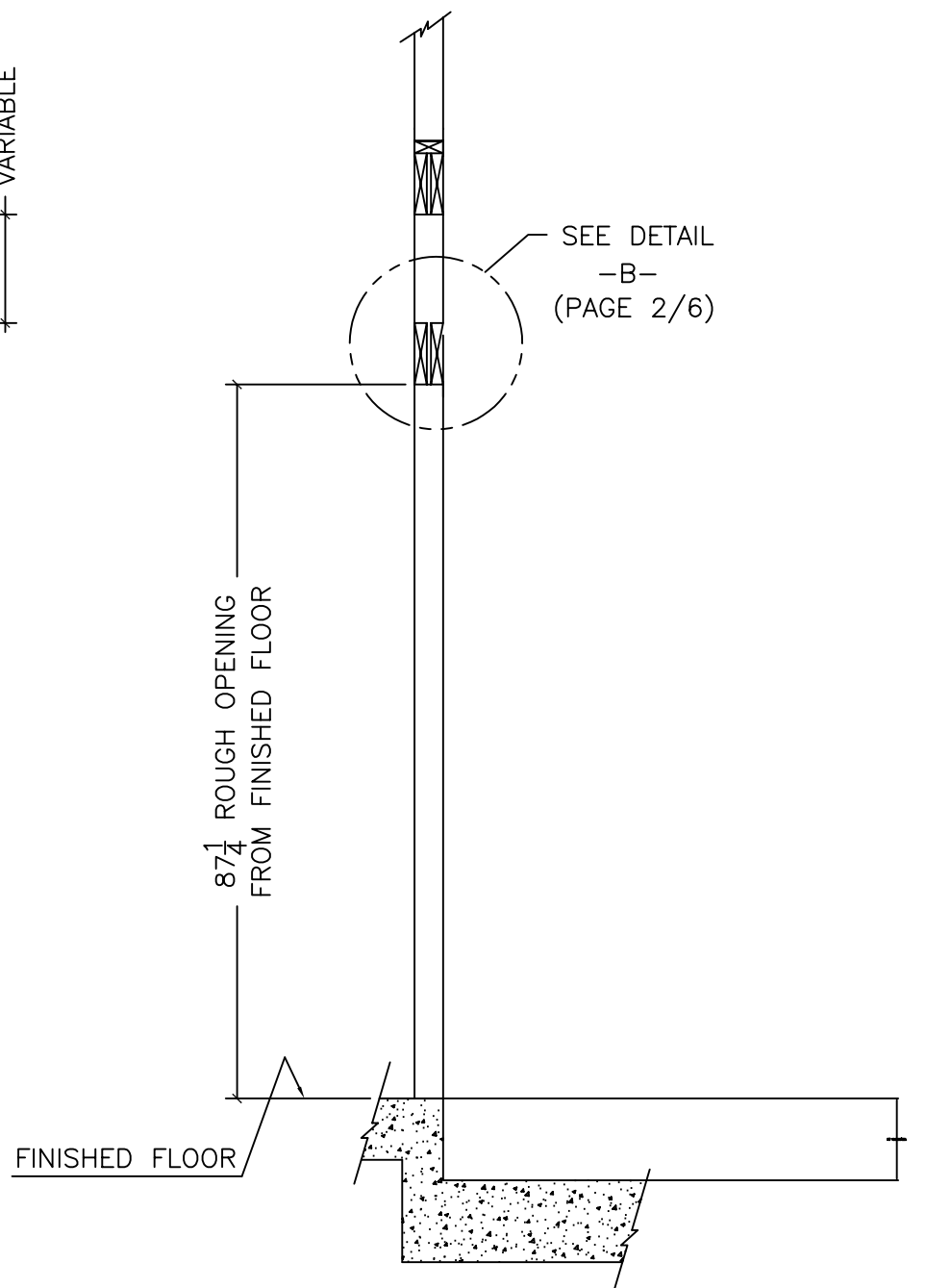
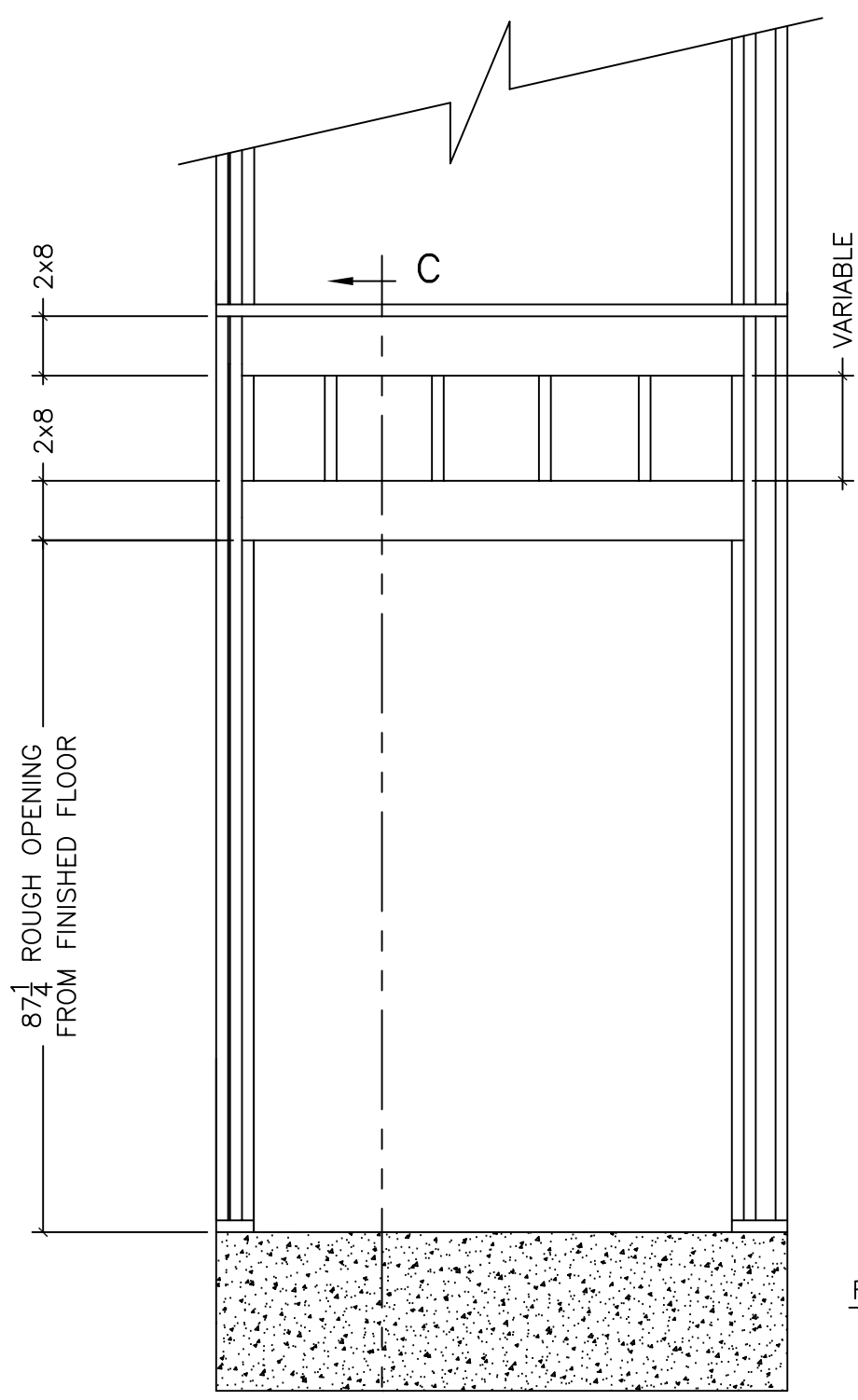
JOB No. _____
SCALE N.T.S.
DRN BY: _____
DATE: _____
REF. No. 123904
SHEET 2 of 2

Rev.#:	Description:	Date:	Appr.:
1	NOTES & DETAILS REVISED	MAY 30, 06	A.W.



NOTES: $\triangle 1$

- TOLERANCES:
 - PLUMBNESS OF EACH WALL TO BE 1/2" WITHIN 50 FT.
 - CLEAR HOISTWAY DIMENSIONS TO BE -0, +1/2" .
- ENTRANCE WALLS NOT TO BE BUILT UNTIL ENTRANCE FRAMES ARE SET.
- ALL WOOD SHALL BE No.2 OR KILN DRIED SPRUCE
- HORIZONTAL WOOD STUDS ANCHORED TO FLOOR AND BRACED TO CEILING/ROOF STRUCTURE.
- GYPSUM BOARD AND RELATED MATERIALS TO MEET LOCAL CONSTRUCTION CODES.
- HOISTWAY MUST BE FREE OF PIPES AND OBSTRUCTIONS.
- PIT WATER PROOFING OR SUMP PUMP AS REQUIRED.
- UNLESS OTHERWISE SPECIFIED, ALL MATERIALS AND LABOR RELATED TO HOISTWAY CONSTRUCTION ARE THE RESPONSIBILITY OF THE GENERAL CONTRACTOR AND NOT THE ELEVATOR SUPPLIER.
- PROVIDE OVERHEAD BEAM FOR LIFTING ELEVATOR COMPONENTS WITH MINIMUM LOAD CAPACITY OF 1000 lb.
- RAIL WALL MUST BE BUILT STRONG ENOUGH TO WITHSTAND RAIL BRACKET LOADS OF 2000 lb.

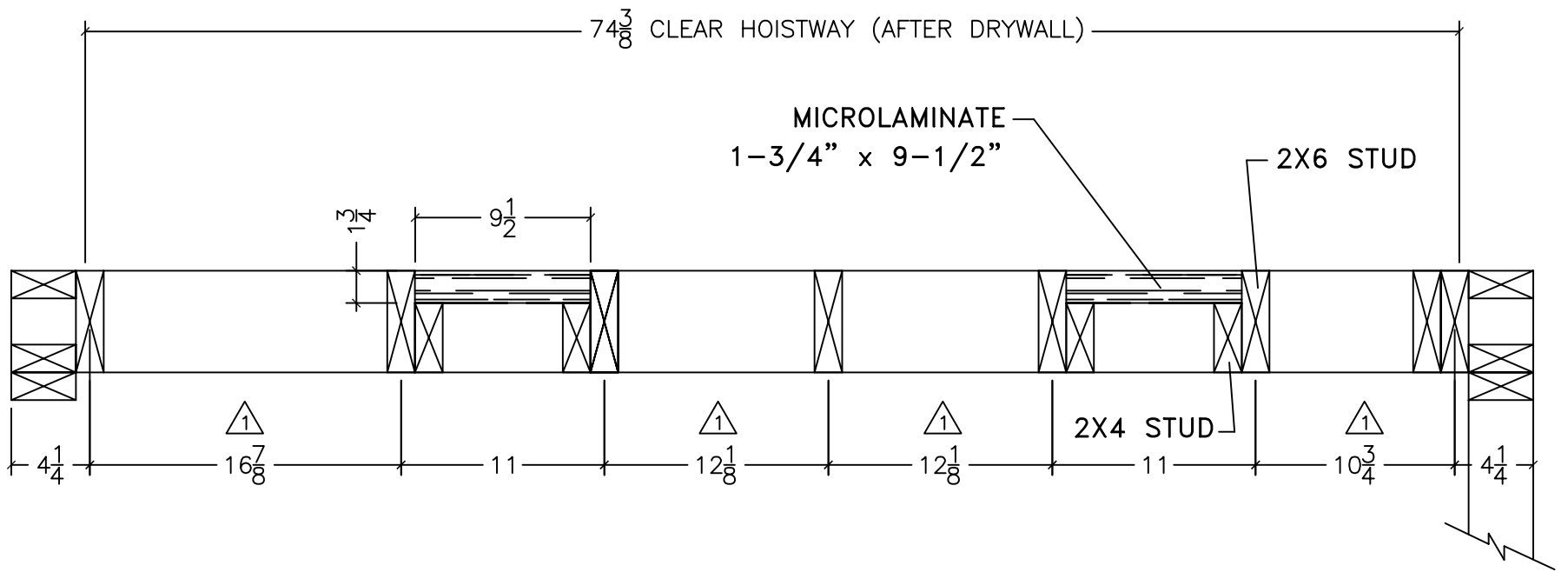


C FRONT ELEVATION

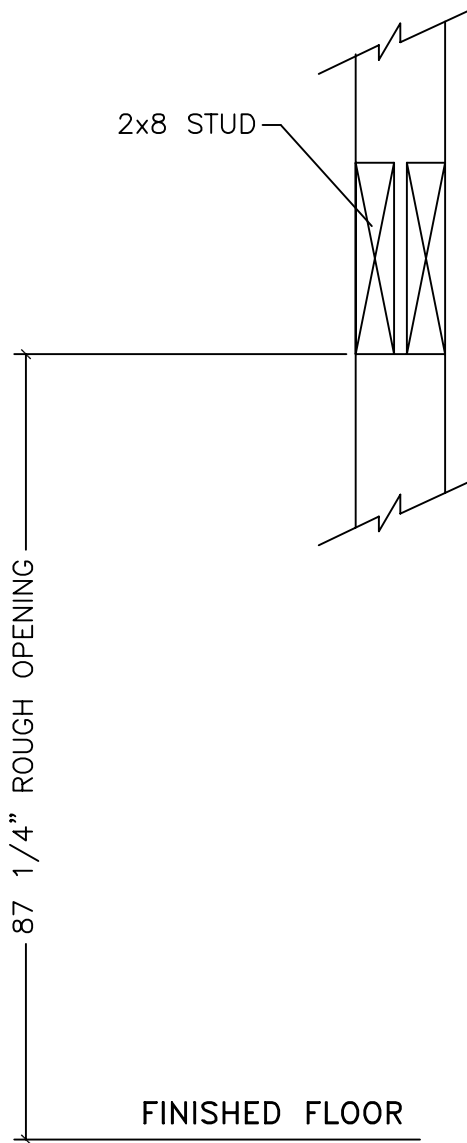
C-C SECTION

(3x5x7 R.H. NON-FIRE RATED-DRYWALL HOISTWAY)

VERTECHS INDUSTRIES INC.	UNLESS OTHERWISE SPECIFIED TOLERANCES ON: .XX= ± .XXX= ± ANGLES ±	ALL DIMENSIONS ARE IN INCHES		DO NOT SCALE THIS DRAWING
	TITLE: ELEVATOR SHAFT PLAN AND ELEVATION	MATERIAL: N/A	DRAWN BY: D. CHALMERS	DATE: OCT. 22, 2003
	FINISH: N/A	CHECKED BY:	DATE:	SCALE: N/A
		PAGE: 1 OF 6	DRAWING No.: 123919	PART# 123919
				SIZE: B



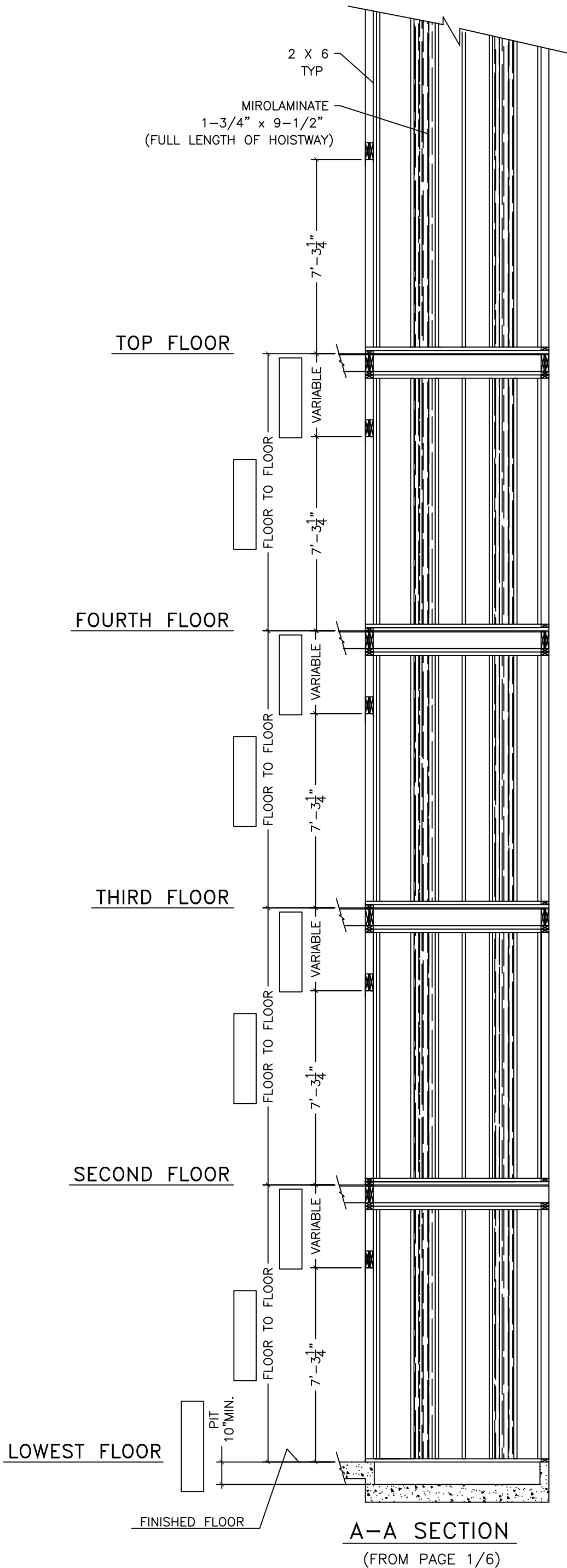
DETAIL -A-
SHAFT FRAMING AT RAIL BRACKET LOCATION
 (FROM PAGE 1/6)



DETAIL -B-
 (FROM PAGE 1/6)

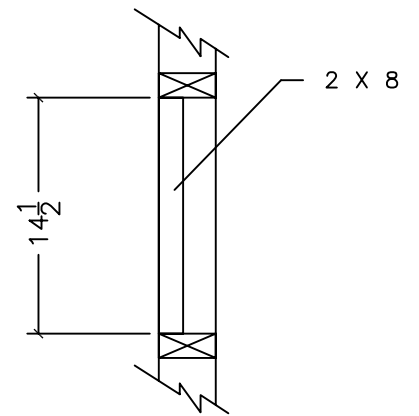
(3x5x7 R.H. NON-FIRE RATED-DRYWALL HOISTWAY)

VERTECHS INDUSTRIES INC.	UNLESS OTHERWISE SPECIFIED TOLERANCES ON: .XX= ± .XXX= ± ANGLES ±	ALL DIMENSIONS ARE IN INCHES		DO NOT SCALE THIS DRAWING
		DRAWN BY: D. CHALMERS	DATE: OCT. 22, 2003	SCALE: N/A
TITLE: ELEVATOR SHAFT PLAN AND DETAILS	MATERIAL: N/A	CHECKED BY:	DATE:	PART# 123919
	FINISH: N/A	PAGE: 2 OF 6	DRAWING No.: 123919	SIZE: B

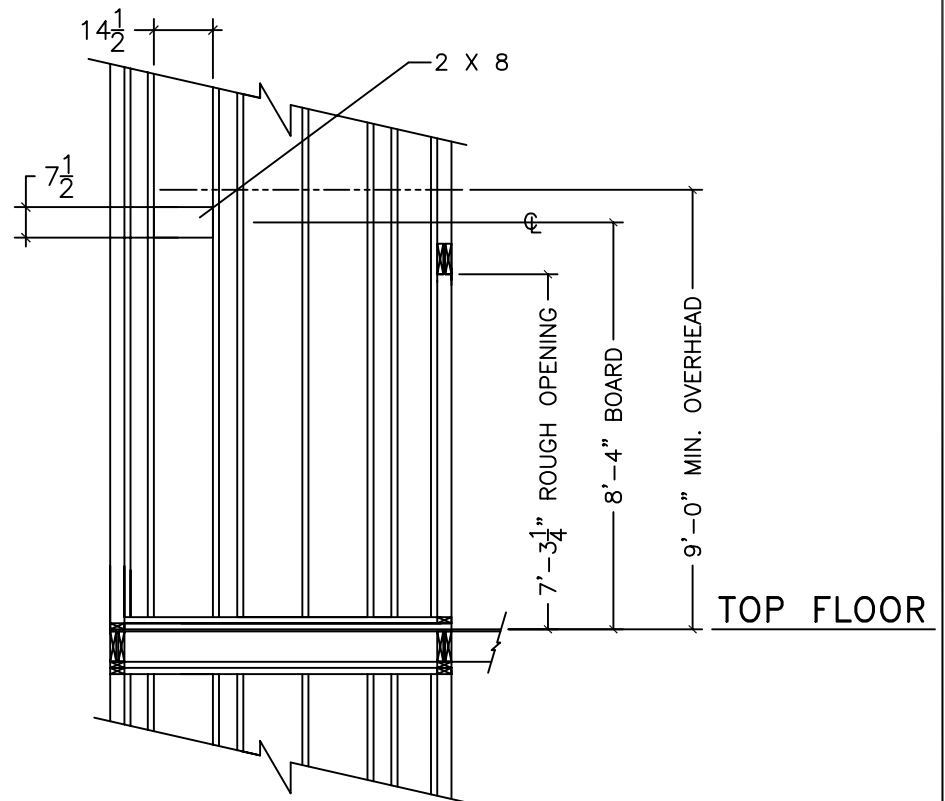


NOTES:

1. FLOOR HEIGHTS VARY
CONTRACTOR TO FILL IN DIMENSIONS ACCORDINGLY.
REFER TO SPECIFIC JOB LAYOUT.
2. ELEVATION SHOWS 5 FLOORS. FOR JOBS WITH LESS
No. OF FLOORS, CROSS OUT INTERMEDIATE ONES.
3. ALL ROUGH OPENING FROM FINISHED FLOOR.



DETAIL -C-
TOP FLOOR
(FROM PAGE 1/6)

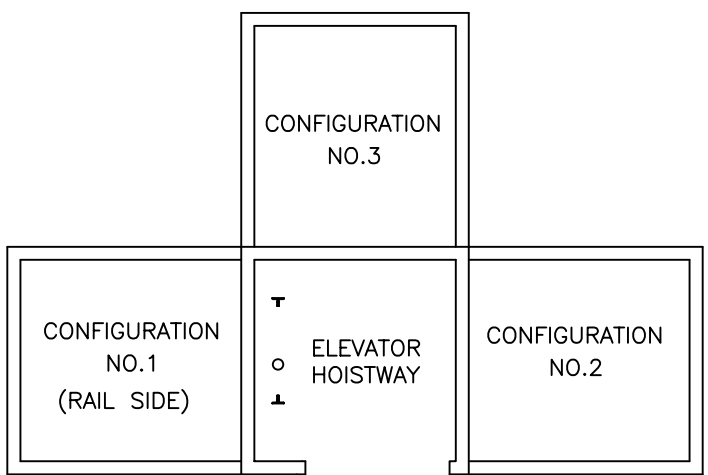


B-B SECTION
(FROM PAGE 1/6)

(3x5x7 R.H. NON-FIRE RATED-DRYWALL HOISTWAY)

VERTECHS INDUSTRIES INC.	UNLESS OTHERWISE SPECIFIED TOLERANCES ON: .XX= ± .XXX= ± ANGLES ±	ALL DIMENSIONS ARE IN INCHES		DO NOT SCALE THIS DRAWING
	TITLE: ELEVATOR SHAFT ELEVATION AND DETAILS	MATERIAL: N/A	DRAWN BY: D. CHALMERS	DATE: OCT. 22, 2003
	FINISH: N/A	CHECKED BY:	DATE:	SCALE: N/A
		PAGE: 3 OF 6	DRAWING No.: 123919	PART# 123919
				SIZE: B

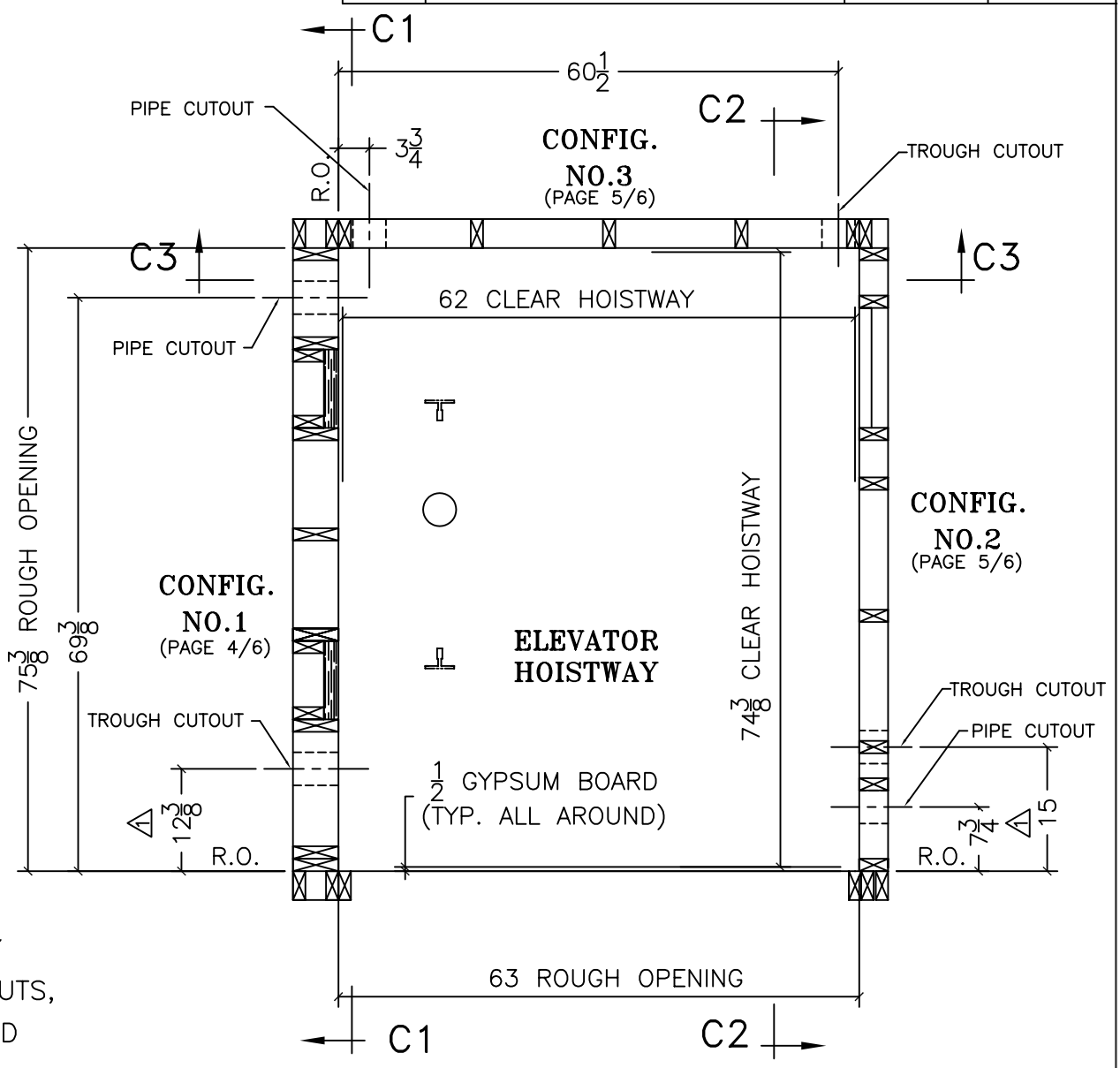
Rev.#:	Description:	Date:	Appr.:
1	DIM. REVISED	MAY 30, 06	A.W.



MACHINE ROOM KEY MAP

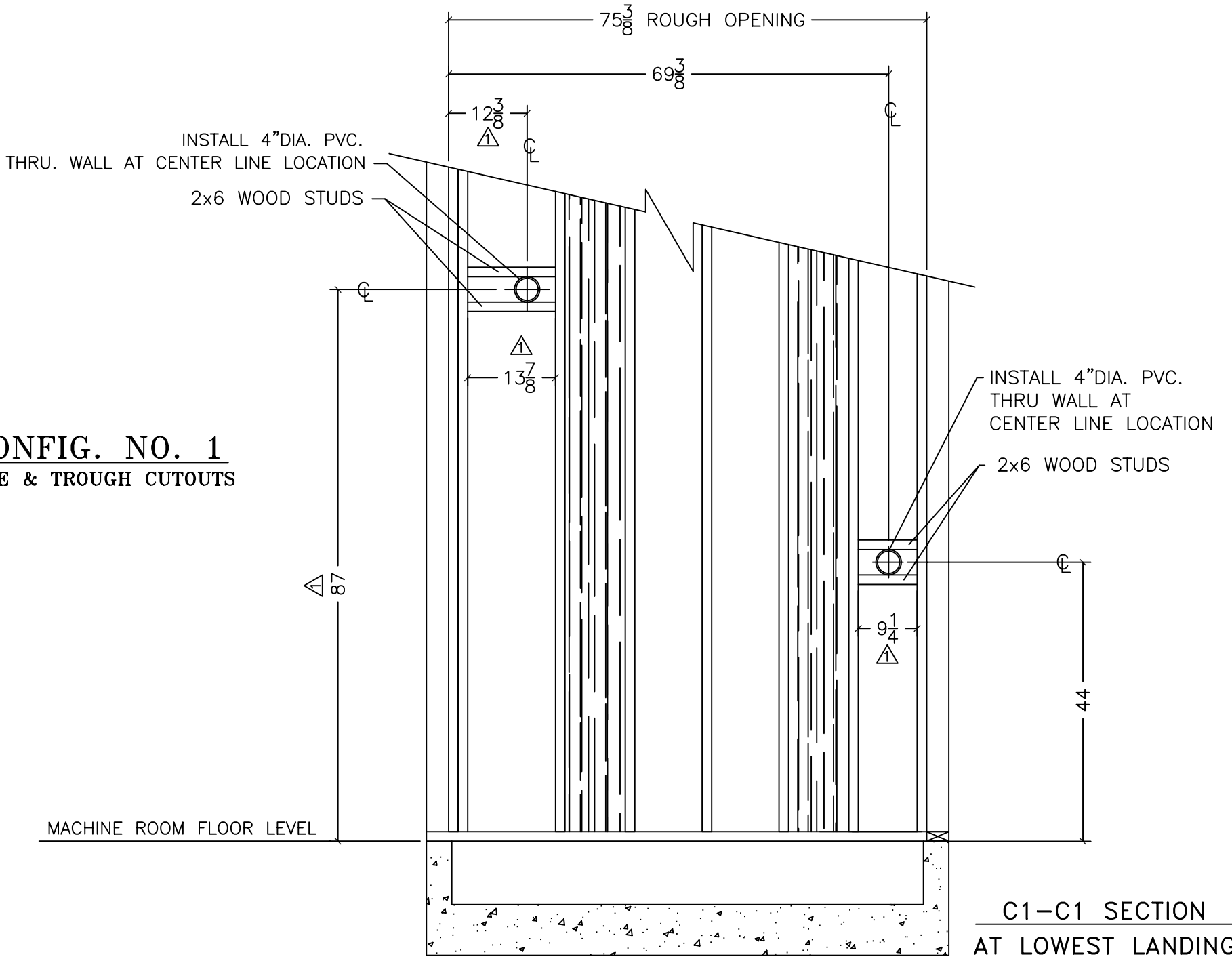
NOTES:

- ONLY ONE WALL OF ELEVATOR HOISTWAY REQUIRES PIPING AND TROUGHING CUTOUTS, CONTRACTOR TO SELECT LOCATION BASED ON MACHINE ROOM CONFIGURATION. (SEE KEY MAP)



**ELEVATOR SHAFT PLAN VIEW
PIPE & TROUGH CUTOUTS**

**CONFIG. NO. 1
PIPE & TROUGH CUTOUTS**

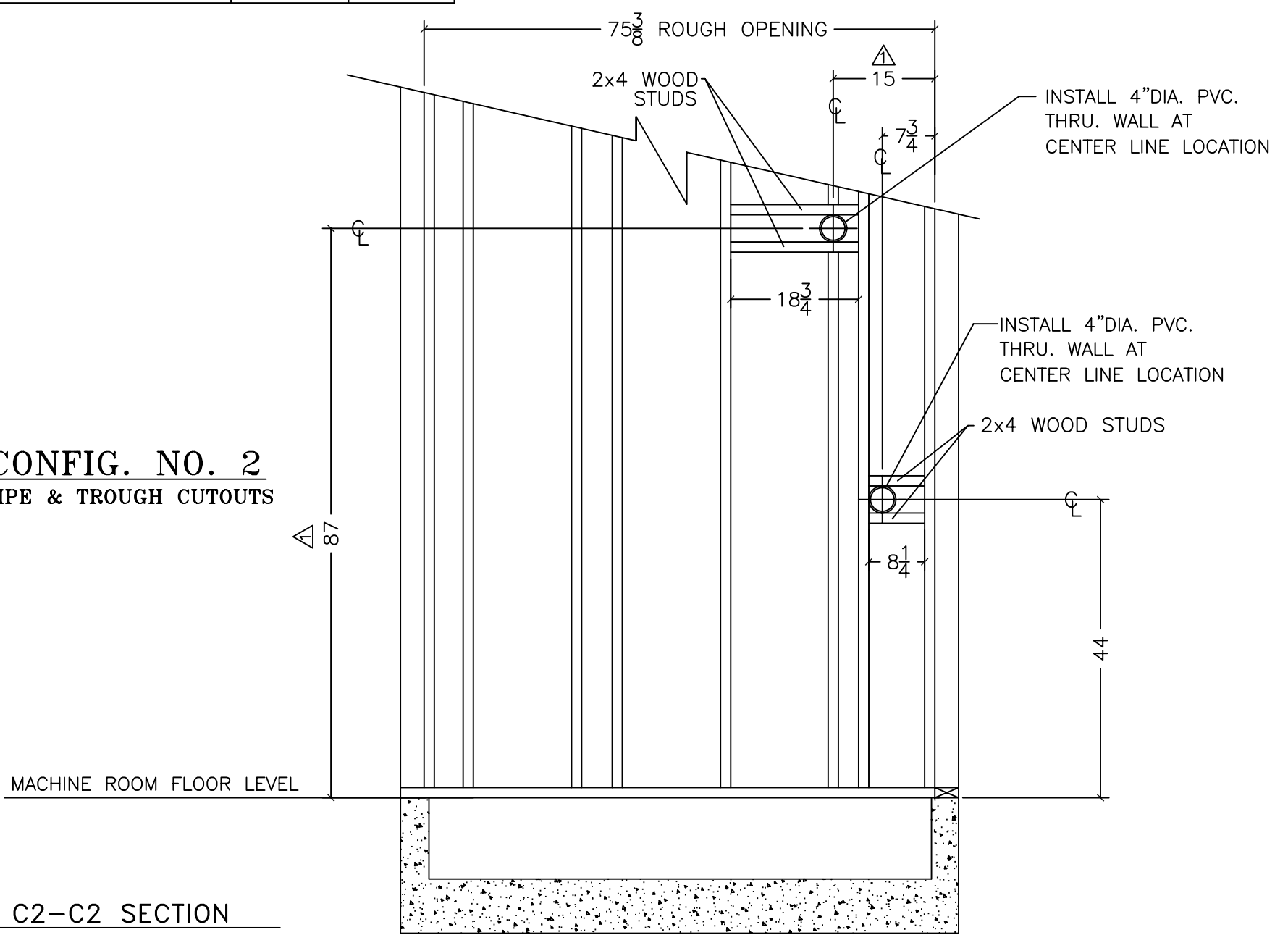


(3x5x7 R.H. NON-FIRE RATED-DRYWALL HOISTWAY)

VERTECHS INDUSTRIES INC.	UNLESS OTHERWISE SPECIFIED TOLERANCES ON: .XX= ± .XXX= ± ANGLES ±	ALL DIMENSIONS ARE IN INCHES		DO NOT SCALE THIS DRAWING
	TITLE: ELEVATOR SHAFT PIPE & TROUGH CUTOUTS	MATERIAL: N/A	DRAWN BY: D. CHALMERS	DATE: OCT. 22, 2003
	FINISH: N/A	CHECKED BY:	DATE:	SCALE: N/A
		PAGE: 4 OF 6	DRAWING No.: 123919	PART# 123919
				SIZE: B

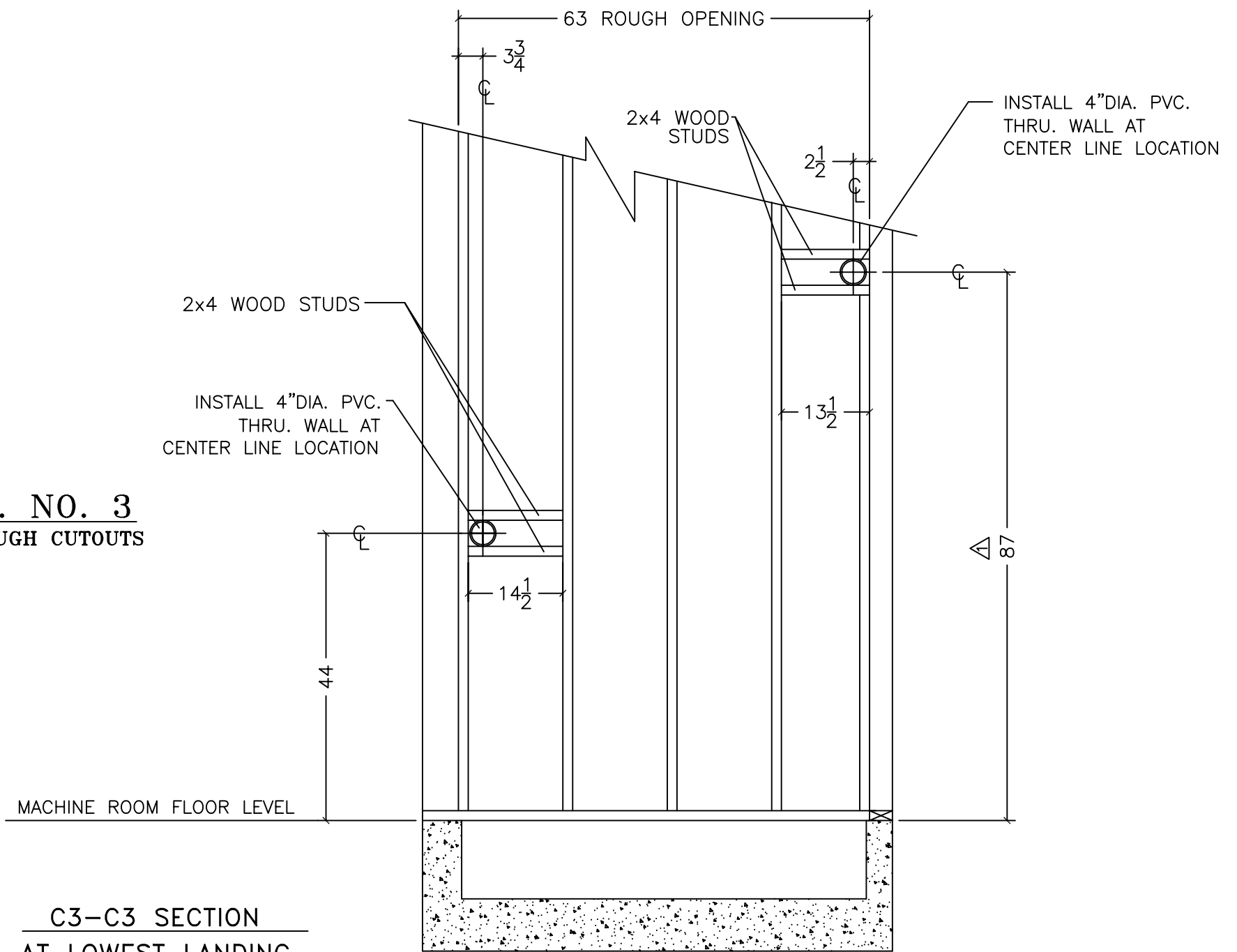
Rev.#:	Description:	Date:	Appr.:
1	DIM. 87 WAS 78, 15 WAS 14 1/2	MAY 30, 06	A.W.

CONFIG. NO. 2
PIPE & TROUGH CUTOUTS



C2-C2 SECTION
AT LOWEST LANDING

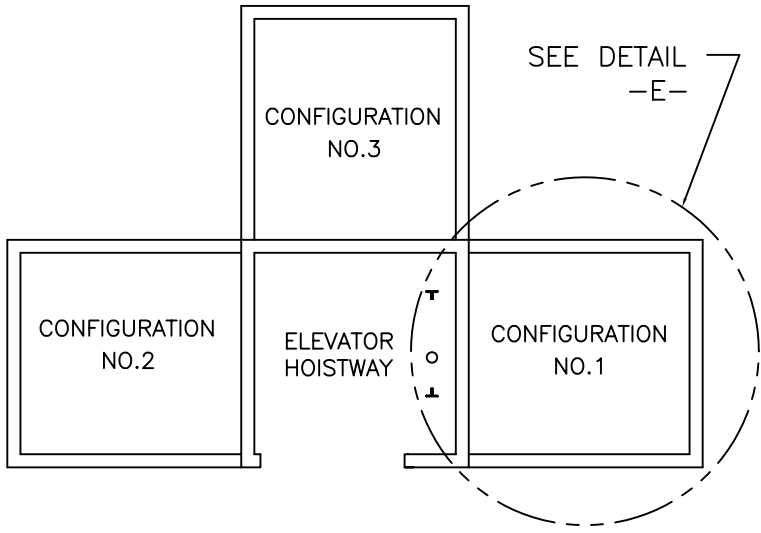
CONFIG. NO. 3
PIPE & TROUGH CUTOUTS



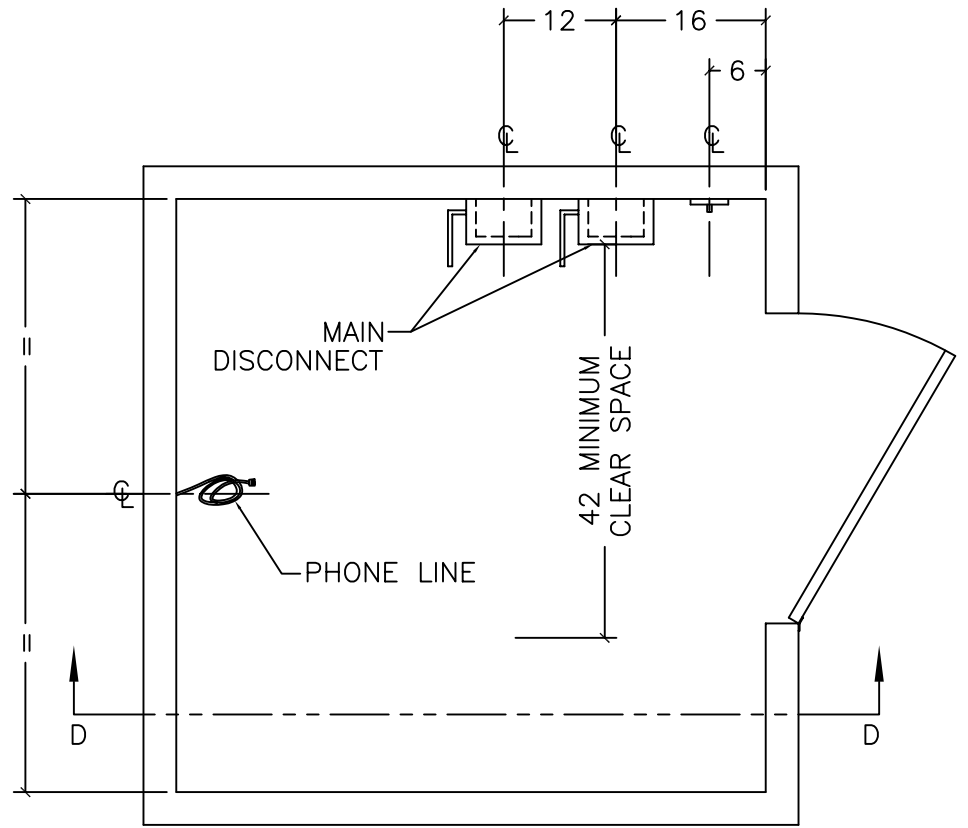
C3-C3 SECTION
AT LOWEST LANDING

(3x5x7 R.H. NON-FIRE RATED-DRYWALL HOISTWAY)

VERTECHS INDUSTRIES INC.	UNLESS OTHERWISE SPECIFIED TOLERANCES ON: .XX= ± .XXX= ± ANGLES ±	ALL DIMENSIONS ARE IN INCHES		DO NOT SCALE THIS DRAWING
		DRAWN BY: D. CHALMERS	DATE: OCT. 22, 2003	SCALE: N/A
TITLE: ELEVATOR SHAFT PIPE & TROUGH CUTOUTS	MATERIAL: N/A	CHECKED BY:	DATE:	PART# 123919
	FINISH: N/A	PAGE: 5 OF 6	DRAWING No.: 123919	SIZE: B



MACHINE ROOM KEY MAP



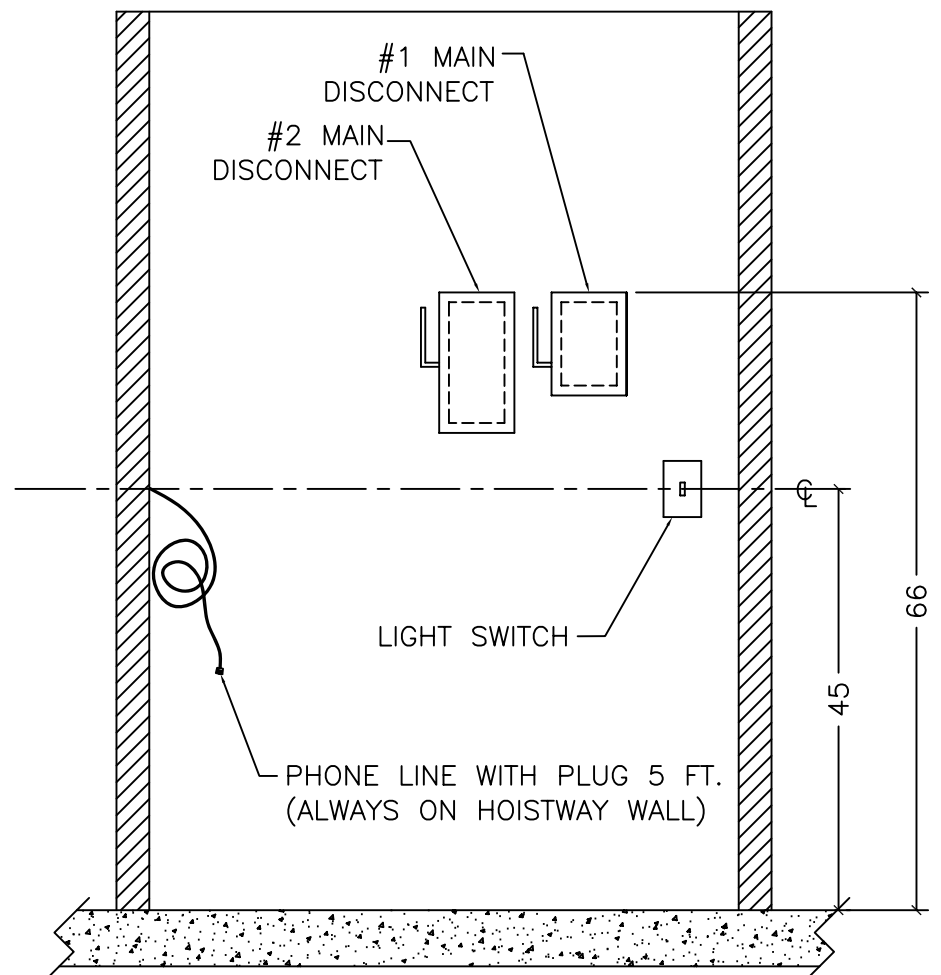
DETAIL -E-
MACHINE ROOM PLAN VIEW
TYPICAL FOR ALL CONFIGURATIONS.

NOTES:

1. INFORMATION IS TYPICAL FOR ALL M/R CONFIGURATIONS.
2. POSITION OF DOOR OPENING MAY VARY FROM THAT SHOWN.
3. MAIN DISCONNECTS & LIGHT SWITCH TO BE MOUNTED ON WALL ADJACENT TO DOOR OPENING, NOT ON HOISTWAY WALL.
4. #1 MAIN DISCONNECT
-120 VOLT, 15 AMP. (FUSED)
5. #2 MAIN DISCONNECT
REFER TO SPECIFIC JOB LAYOUT DRAWING FOR PUMP MOTOR HP.

PUMP MOTOR H.P.	#2 DISCONNECT SPECIFICATION
2.5	1 PHASE WITH AUX. CONTACT, 230 VOLT, 40 AMP. (FUSED)
3.5	
5.0	
7.5	1 PHASE WITH AUX. CONTACT, 230 VOLT, 80 AMP. (FUSED)

6. MACHINE ROOM TEMP TO BE MAINTAINED 50°F - 90°F

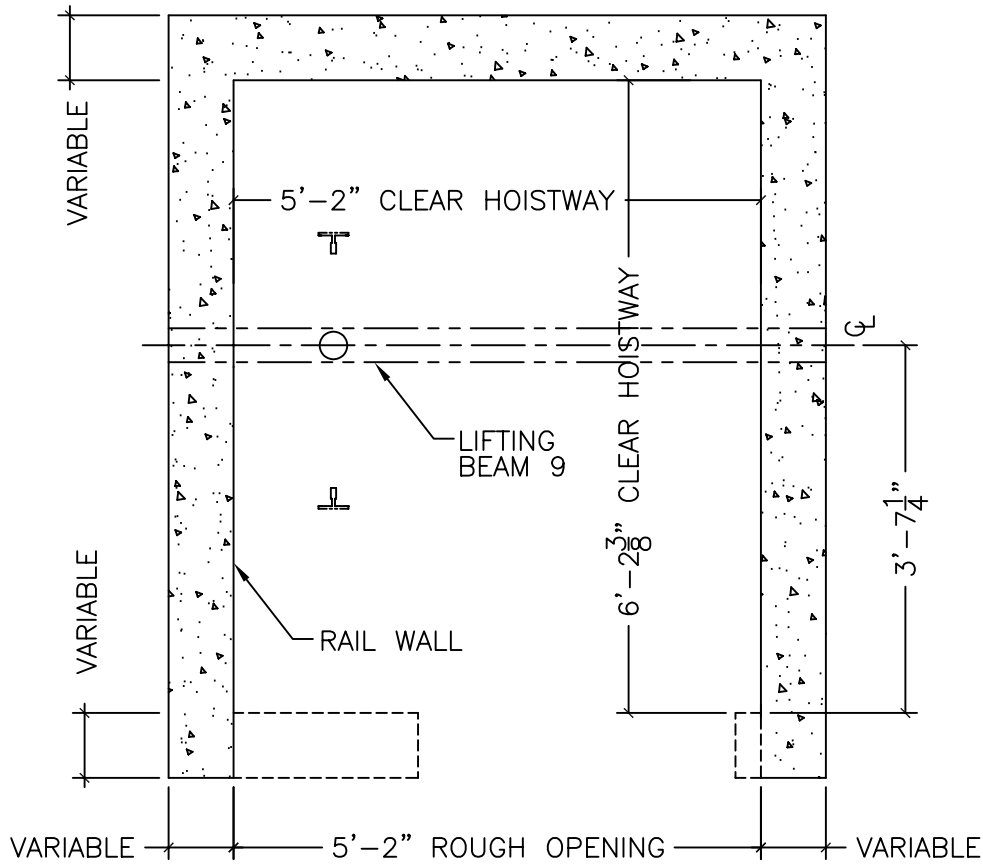


D-D SECTION

(3x5x7 R.H. NON-FIRE RATED-DRYWALL HOISTWAY)

VERTECHS INDUSTRIES INC.	UNLESS OTHERWISE SPECIFIED TOLERANCES ON: .XX= ± .XXX= ± ANGLES ±	ALL DIMENSIONS ARE IN INCHES		DO NOT SCALE THIS DRAWING
		DRAWN BY: D. CHALMERS	DATE: SEPT. 21, 2004	SCALE: N/A
TITLE: MACHINE ROOM ELECTRICAL INFORMATION	MATERIAL: N/A	CHECKED BY:	DATE:	PART# 123919
	FINISH: N/A	PAGE: 6 OF 6	DRAWING No.: 123919	SIZE: B

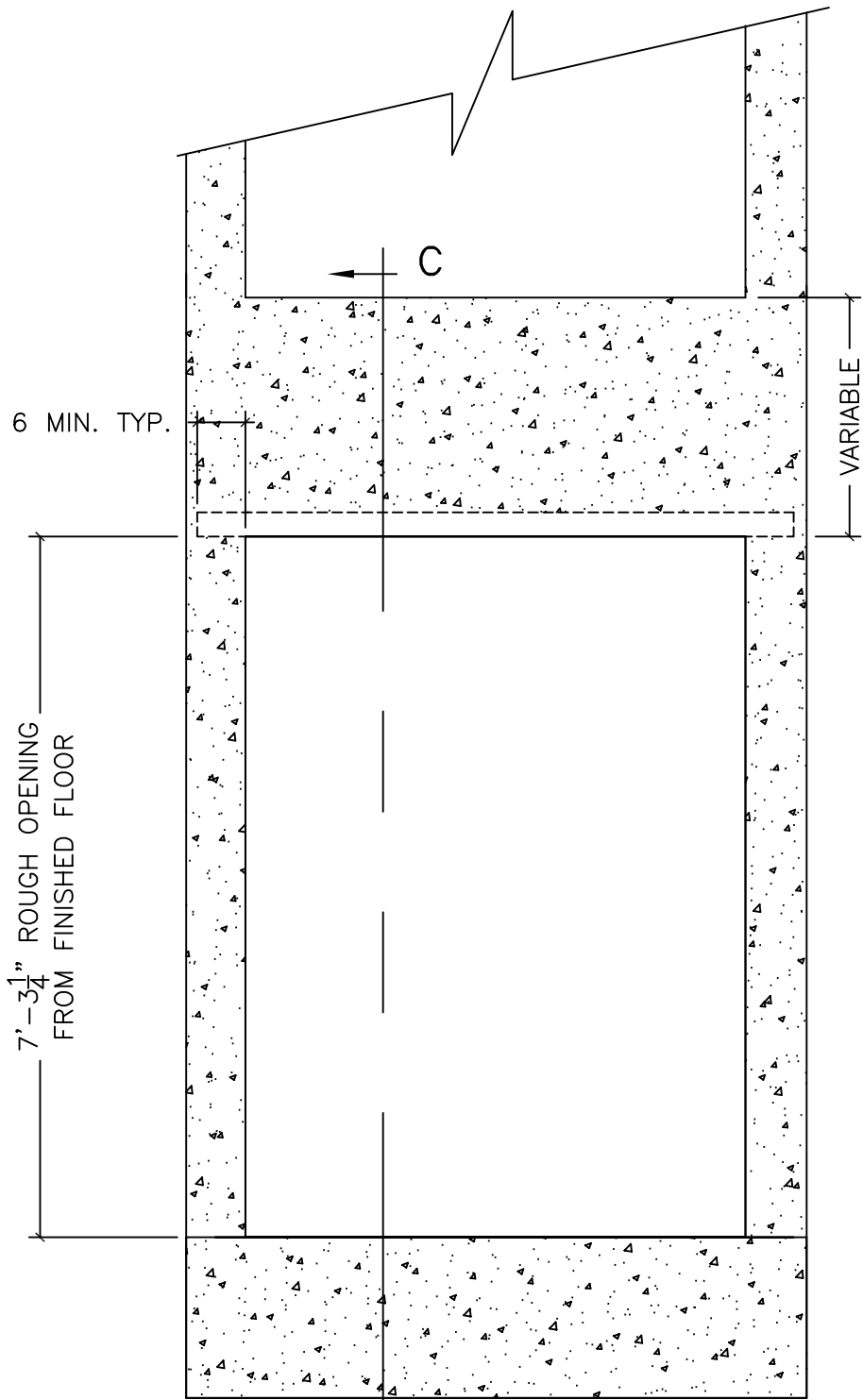
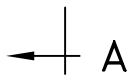
SEE SECTION A-A
(PAGE 2/5)



PLAN OF HOISTWAY

NOTES:

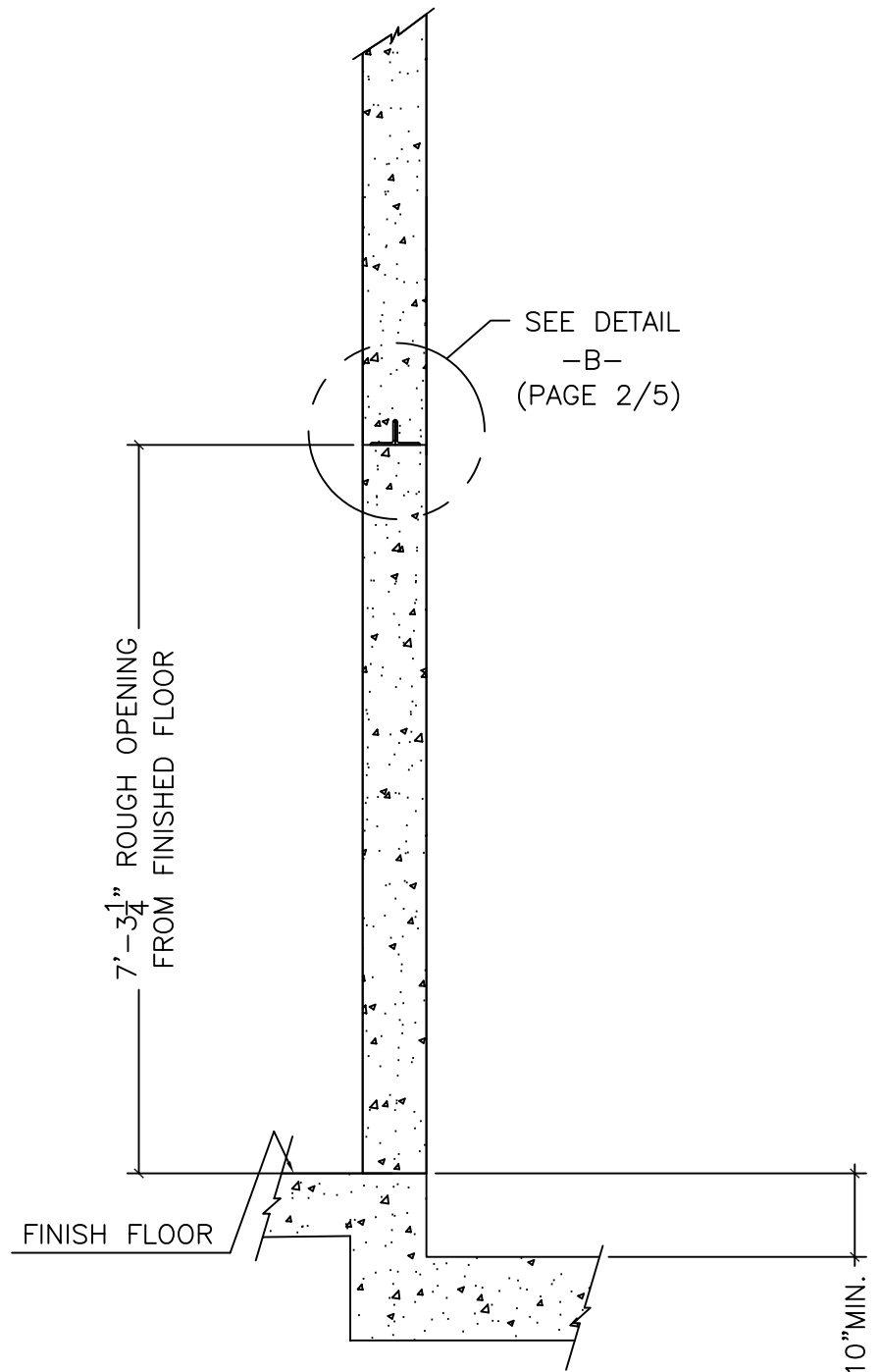
1. TOLERANCES:
-PLUMBNESS OF EACH WALL TO BE 1/2" WITHIN 50 FT.
-CLEAR HOISTWAY DIMENSIONS TO BE +1/2", -0".
2. HOISTWAY CAN BE BLOCK OR CONCRETE.
3. RAIL WALL TO BE DESIGNED AND BUILT TO HANDLE LOADS SPECIFIED IN THE LAYOUT.
4. WALL THICKNESS TO MEET LOCAL CODE REQUIRMENTS
5. HOISTWAY MUST BE FREE OF PIPES AND OBSTRUCTIONS.
6. PIT WATER PROOFING OR SUMP PUMP AS REQUIRED.
7. ENTRANCE WALLS NOT TO BE BUILT UNTIL ENTRANCE FRAMES ARE SET. PROVIDE GROUTING BETWEEN FINISHED FRAMES AND SILL. INCLUDING PATCHING, CAULKING, AND TOUCH UP WORK.
8. ENTRANCE FRAMES ARE NOT DESIGNED TO SUPPORT OVERHEAD WALL LOADS.
9. PROVIDE OVERHEAD BEAM FOR LIFTING ELEVATOR COMPONENTS WITH MINIMUM LOAD CAPACITY OF 1000 lb..



FRONT ELEVATION

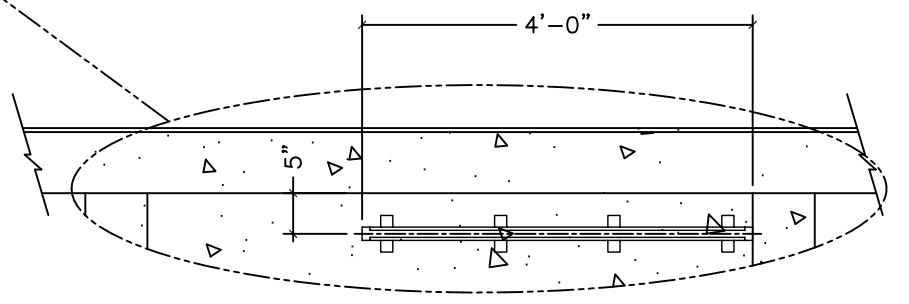
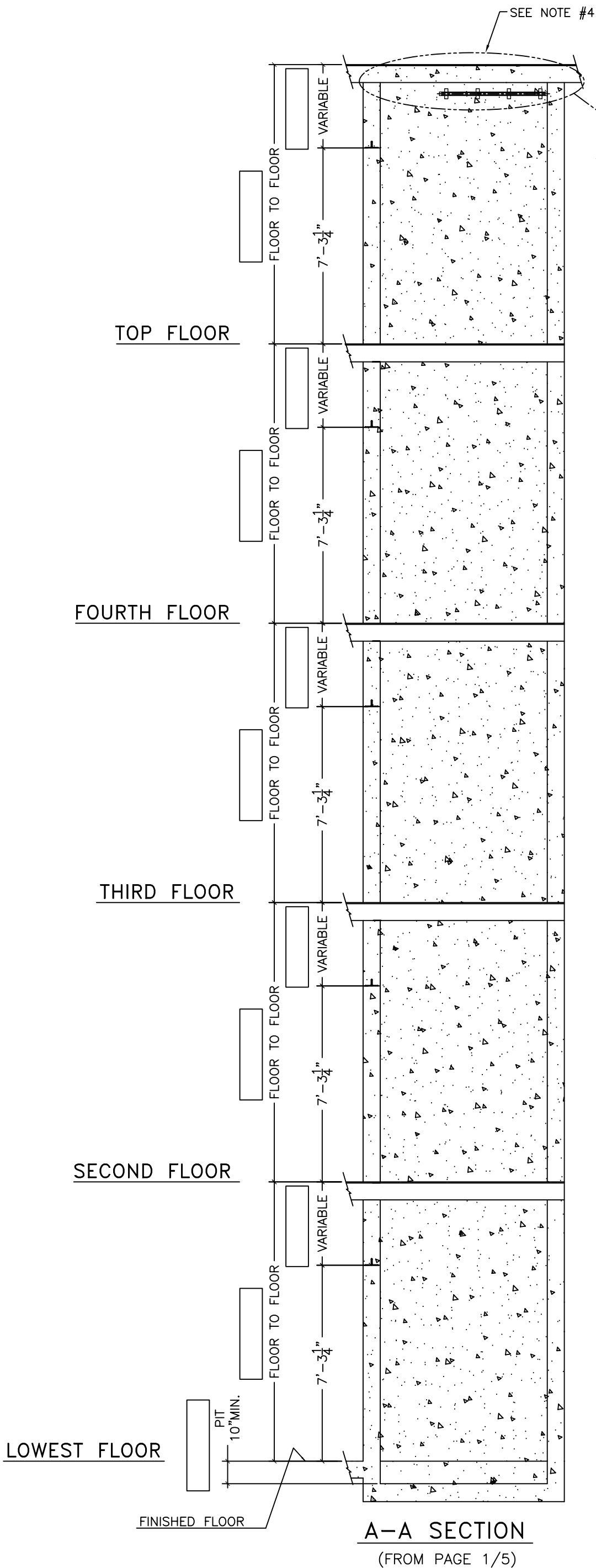


(3x5x7 R.H. NON-FIRE RATED-MASONRY HOISTWAY)



C-C SECTION

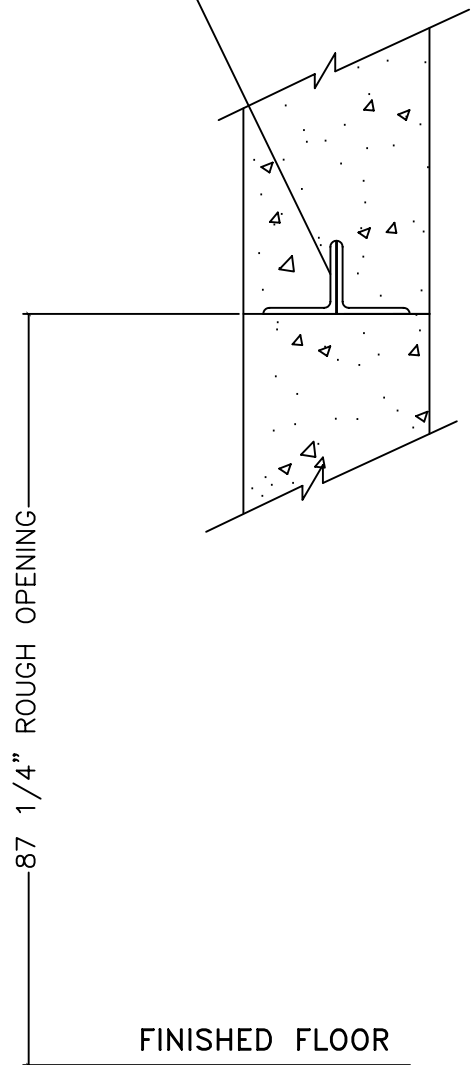
VERTECHS INDUSTRIES INC.	UNLESS OTHERWISE SPECIFIED TOLERANCES ON: .XX= ± .XXX= ± ANGLES ±	ALL DIMENSIONS ARE IN INCHES		DO NOT SCALE THIS DRAWING
		DRAWN BY: D. CHALMERS	DATE: NOV. 11, 2004	SCALE: N/A
TITLE: ELEVATOR SHAFT PLAN AND ELEVATION	MATERIAL: N/A	CHECKED BY:	DATE:	PART# 123944
	FINISH: N/A	PAGE: 1 OF 5	DRAWING No.: 123944	SIZE: B



NOTES:

1. FLOOR HEIGHTS VARY
CONTRACTOR TO FILL IN DIMENSIONS ACCORDINGLY.
REFER TO SPECIFIC JOB LAYOUT.
2. ELEVATION SHOWS 5 FLOORS. FOR JOBS WITH LESS
No. OF FLOORS, CROSS OUT INTERMEDIATE ONES.
3. ALL ROUGH OPENING FROM FINISHED FLOOR.
4. WALL INSERT SAME AS RAIL BRACKET WALL INSERTS.

LINTEL SUPPORT
FOR HEADER



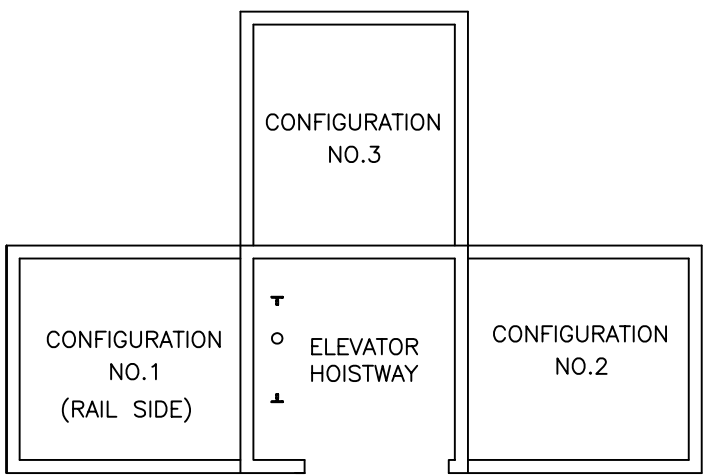
DETAIL -B-
(FROM PAGE 1/5)

A-A SECTION
(FROM PAGE 1/5)

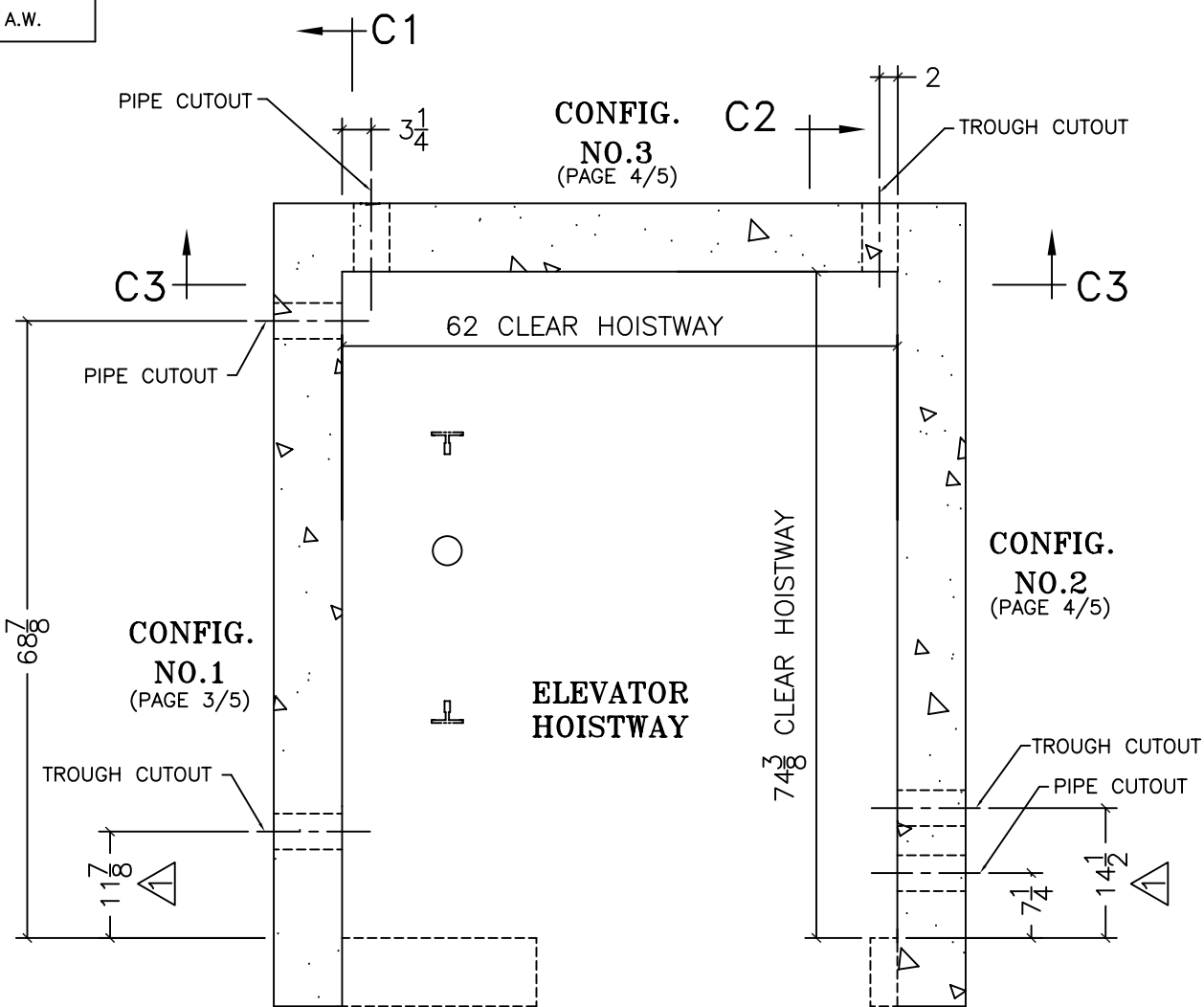
(3x5x7 R.H. NON-FIRE RATED-MASONRY HOISTWAY)

VERTECHS INDUSTRIES INC.	UNLESS OTHERWISE SPECIFIED TOLERANCES ON: .XX= ± .XXX= ± ANGLES ±	ALL DIMENSIONS ARE IN INCHES		DO NOT SCALE THIS DRAWING
	TITLE: ELEVATOR SHAFT ELEVATION AND DETAILS	MATERIAL: N/A	DRAWN BY: D. CHALMERS	DATE: NOV. 11, 2004
	FINISH: N/A	CHECKED BY:	DATE:	PART# 123944
		PAGE: 2 OF 5	DRAWING No.: 123944	SIZE: B

Rev.#:	Description:	Date:	Appr.:
1	DIM. REVISED	MAY 30, 06	A.W.



MACHINE ROOM KEY MAP

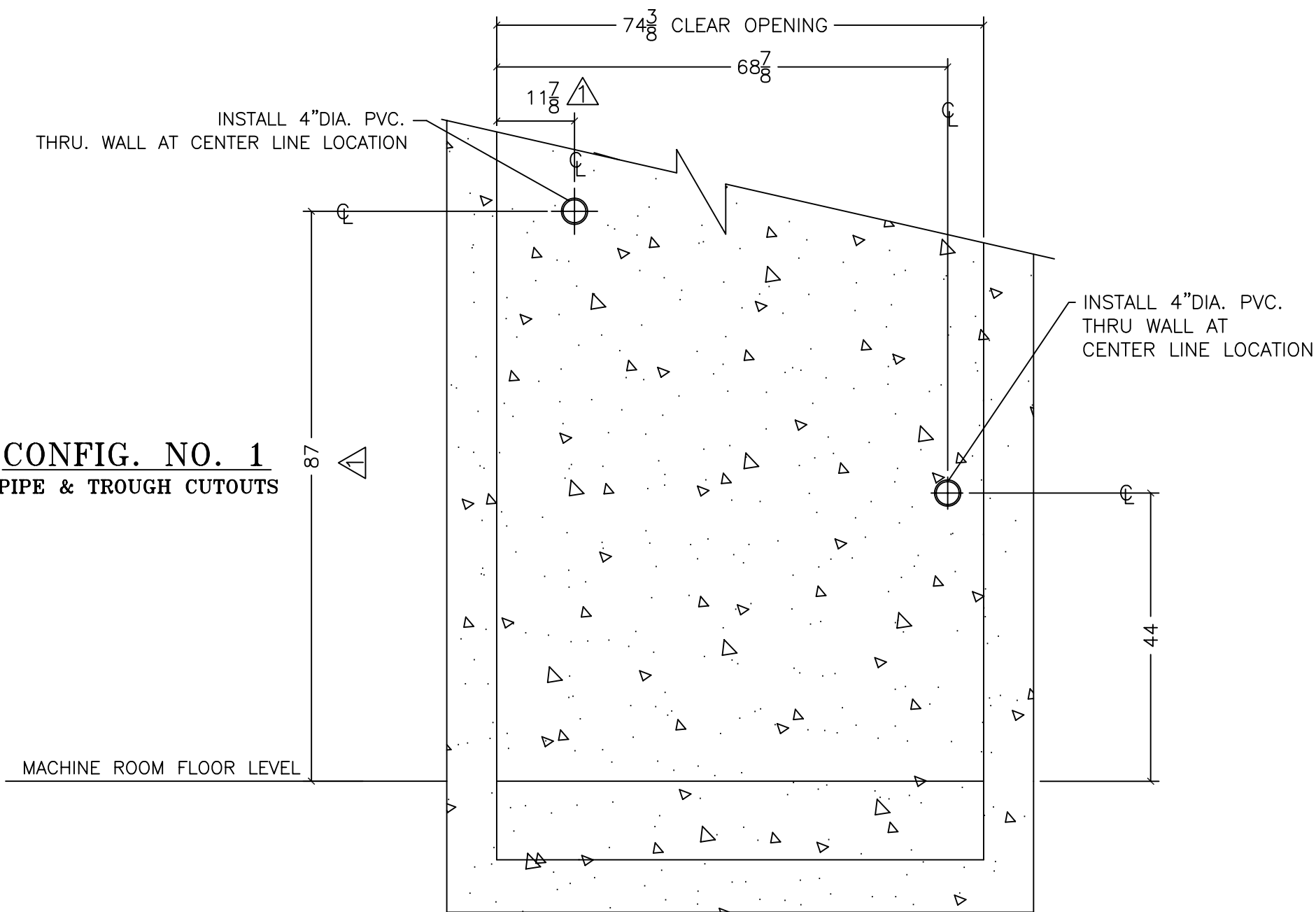


**ELEVATOR SHAFT PLAN VIEW
PIPE & TROUGH CUTOUTS**

NOTES:

- ONLY ONE WALL OF ELEVATOR HOISTWAY REQUIRES PIPING AND TROUGHING CUTOUTS, CONTRACTOR TO SELECT LOCATION BASED ON MACHINE ROOM CONFIGURATION. (SEE KEY MAP)

**CONFIG. NO. 1
PIPE & TROUGH CUTOUTS**



**C1-C1 SECTION
AT LOWEST LANDING**

(3x5x7 R.H. NON-FIRE RATED-MASONRY HOISTWAY)

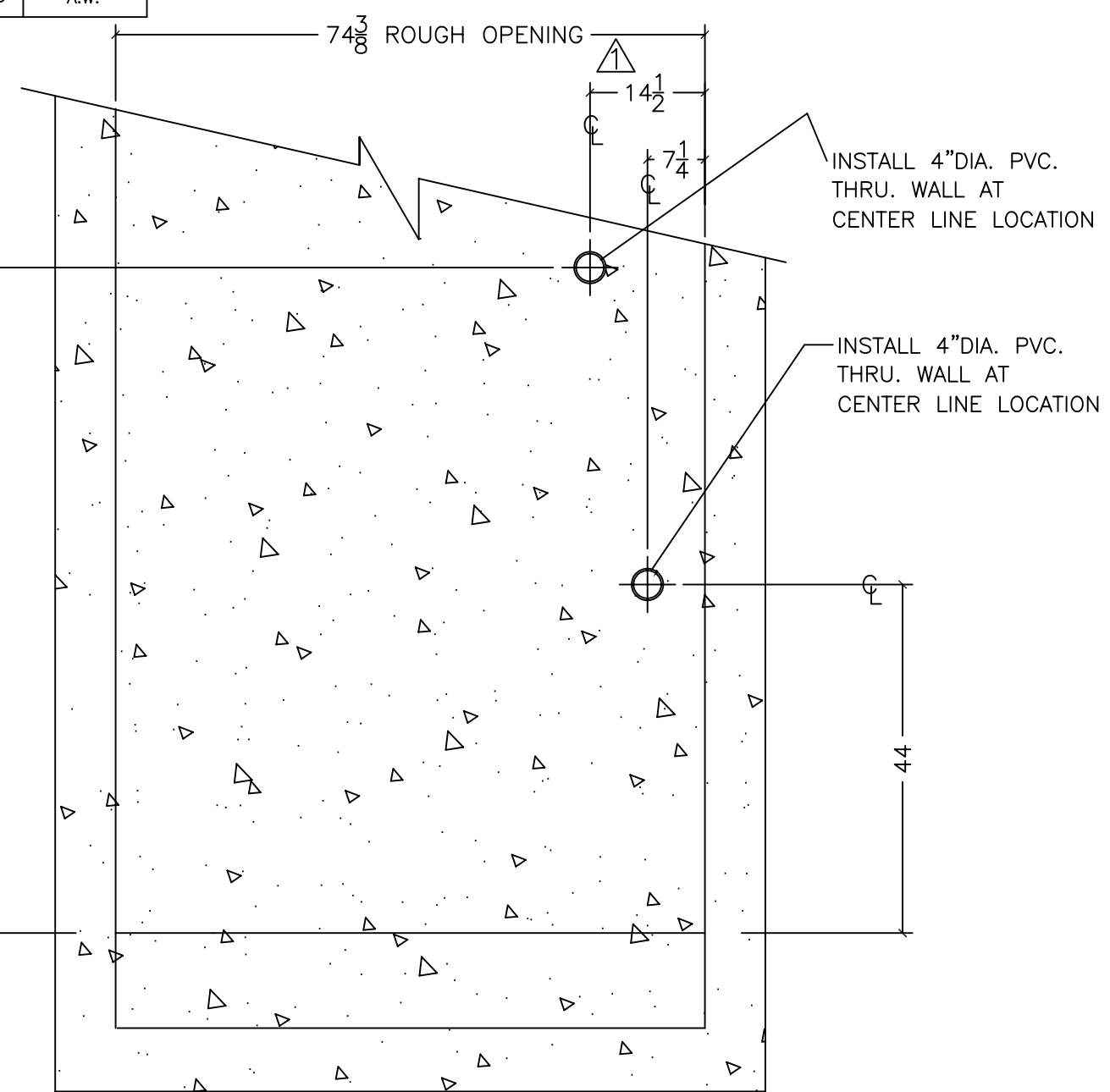
VERTECHS INDUSTRIES INC.	UNLESS OTHERWISE SPECIFIED TOLERANCES ON: .XX= ± .XXX= ± ANGLES ±	ALL DIMENSIONS ARE IN INCHES		DO NOT SCALE THIS DRAWING
		DRAWN BY: D. CHALMERS	DATE: NOV. 11, 2004	SCALE: N/A
TITLE: ELEVATOR SHAFT PIPE & TROUGH CUTOUTS	MATERIAL: N/A	CHECKED BY:	DATE:	PART# 123944
	FINISH: N/A	PAGE: 3 OF 5	DRAWING No.: 123944	SIZE: B

Rev.#:	Description:	Date:	Appr.:
1	DIM. 87 WAS 78, 14 1/2 WAS 14	MAY 30, 06	A.W.

CONFIG. NO. 2
PIPE & TROUGH CUTOUTS

MACHINE ROOM FLOOR LEVEL

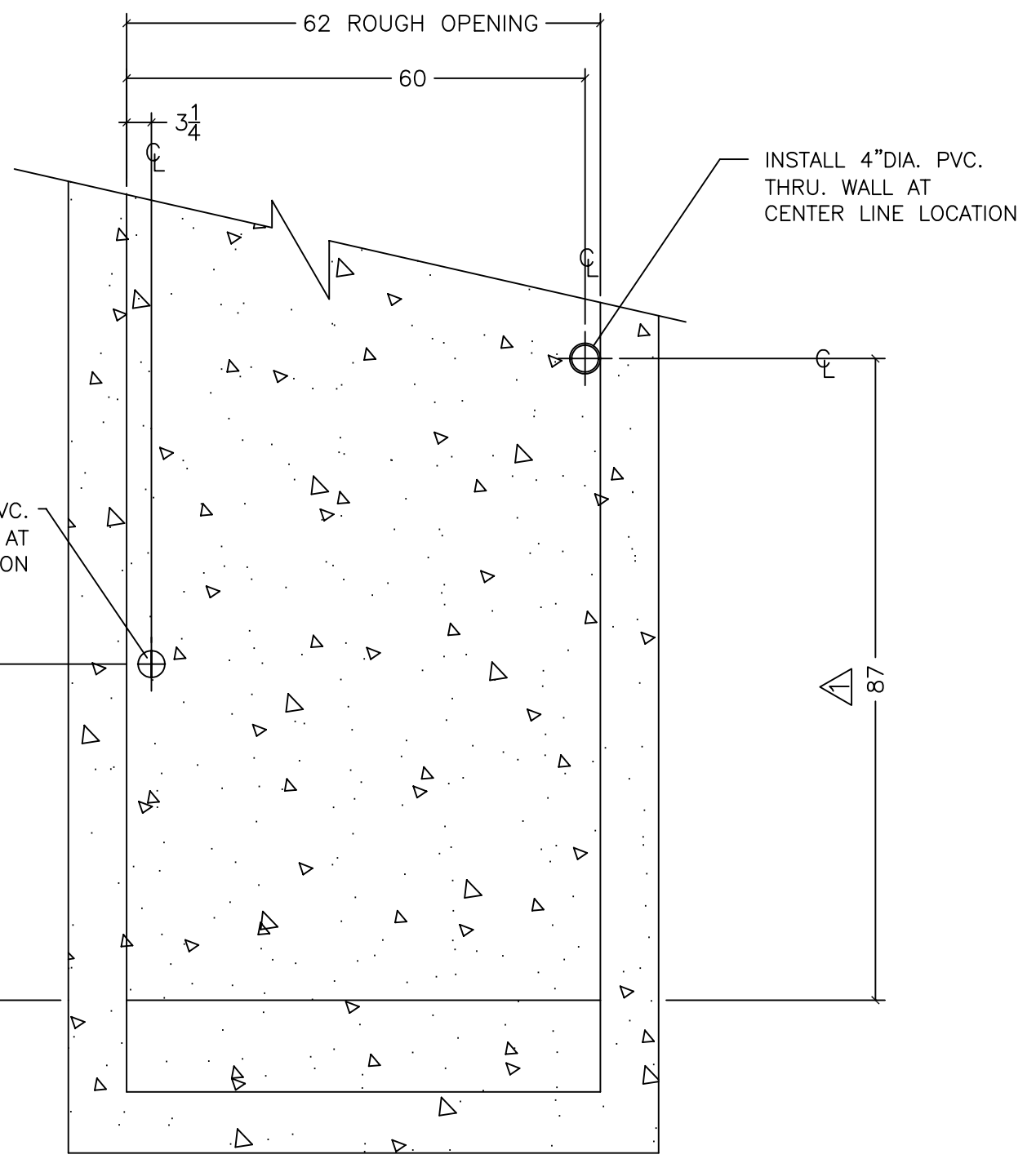
C2-C2 SECTION
AT LOWEST LANDING



CONFIG. NO. 3
PIPE & TROUGH CUTOUTS

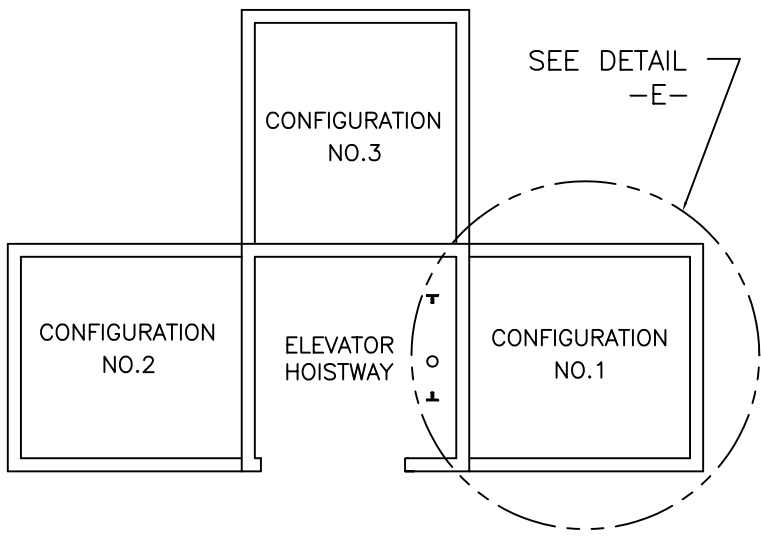
MACHINE ROOM FLOOR LEVEL

C3-C3 SECTION
AT LOWEST LANDING

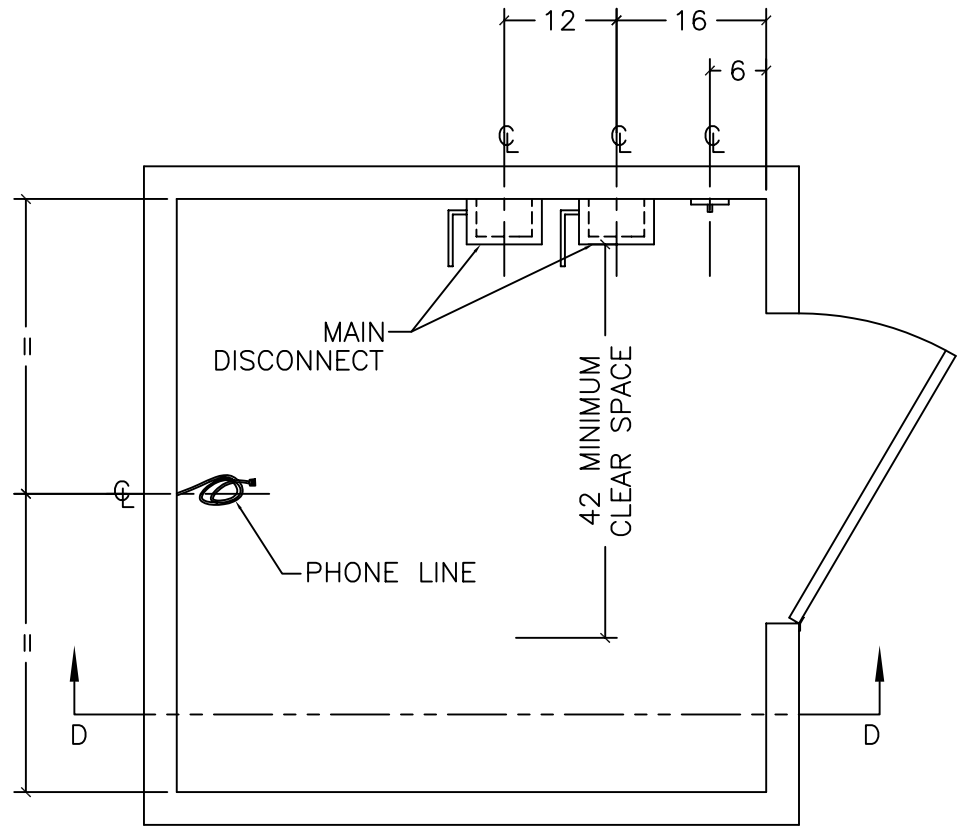


(3x5x7 R.H. NON-FIRE RATED-MASONRY HOISTWAY)

VERTECHS INDUSTRIES INC.	UNLESS OTHERWISE SPECIFIED TOLERANCES ON: .XX= ± .XXX= ± ANGLES ±	ALL DIMENSIONS ARE IN INCHES		DO NOT SCALE THIS DRAWING
		DRAWN BY: D. CHALMERS	DATE: NOV. 11, 2004	SCALE: N/A
TITLE: ELEVATOR SHAFT PIPE & TROUGH CUTOUTS	MATERIAL: N/A	CHECKED BY:	DATE:	PART# 123944
	FINISH: N/A	PAGE: 4 OF 5	DRAWING No.: 123944	SIZE: B



MACHINE ROOM KEY MAP



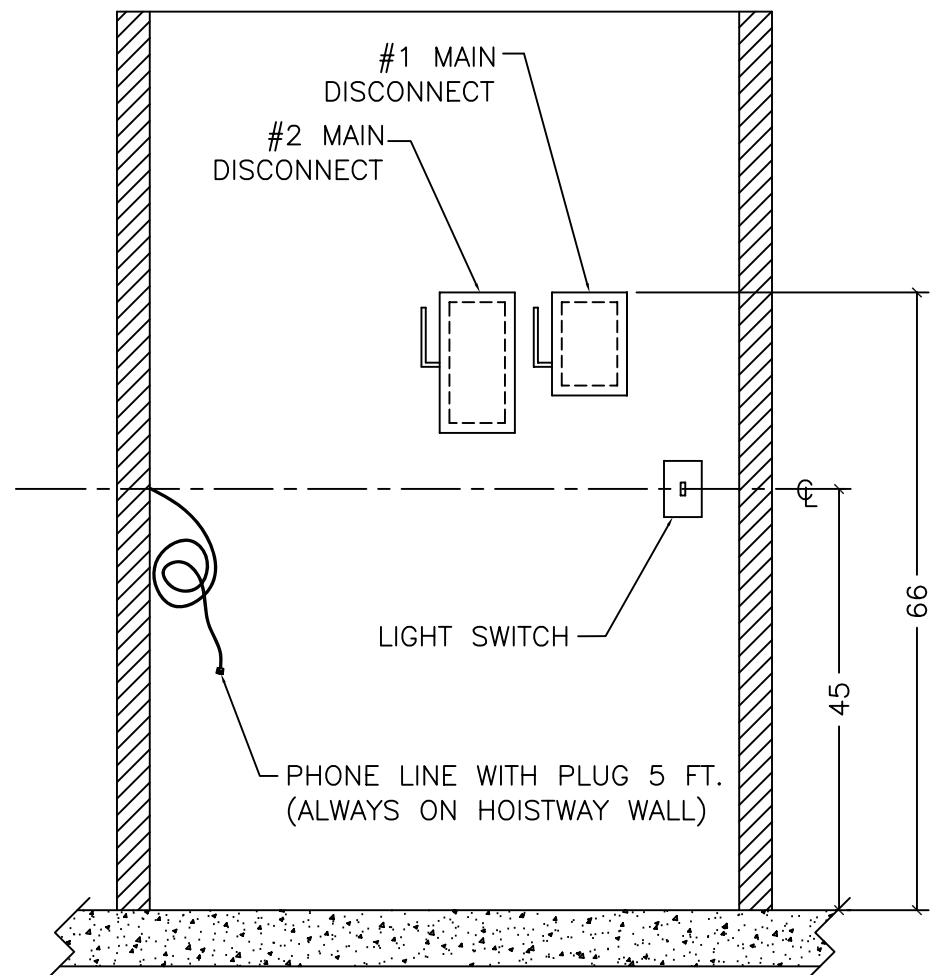
DETAIL -E-
MACHINE ROOM PLAN VIEW
TYPICAL FOR ALL CONFIGURATIONS.

NOTES:

1. INFORMATION IS TYPICAL FOR ALL M/R CONFIGURATIONS.
2. POSITION OF DOOR OPENING MAY VARY FROM THAT SHOWN.
3. MAIN DISCONNECTS & LIGHT SWITCH TO BE MOUNTED ON WALL ADJACENT TO DOOR OPENING, NOT ON HOISTWAY WALL.
4. #1 MAIN DISCONNECT
-120 VOLT, 15 AMP. (FUSED)
5. #2 MAIN DISCONNECT
REFER TO SPECIFIC JOB LAYOUT DRAWING FOR PUMP MOTOR HP.

PUMP MOTOR H.P.	#2 DISCONNECT SPECIFICATION
2.5	1 PHASE WITH AUX. CONTACT, 230 VOLT, 40 AMP. (FUSED)
3.5	
5.0	
7.5	1 PHASE WITH AUX. CONTACT, 230 VOLT, 80 AMP. (FUSED)

6. MACHINE ROOM TEMP TO BE MAINTAINED 50°F - 90°F



D-D SECTION

(3x5x7 R.H. NON-FIRE RATED-MASONRY HOISTWAY)

VERTECHS INDUSTRIES INC.	UNLESS OTHERWISE SPECIFIED TOLERANCES ON: .XX= ± .XXX= ± ANGLES ±	ALL DIMENSIONS ARE IN INCHES		DO NOT SCALE THIS DRAWING
		DRAWN BY: D. CHALMERS	DATE: NOV. 11, 2004	SCALE: N/A
TITLE: MACHINE ROOM ELECTRICAL INFORMATION	MATERIAL: N/A	CHECKED BY:	DATE:	PART# 123944
	FINISH: N/A	PAGE: 5 OF 5	DRAWING No.: 123944	SIZE: B